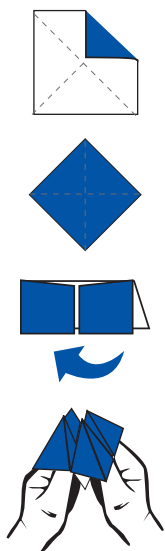


How to make your chatterbox

1. Cut the paper to make a square, fold in half and half again and reopen flat.
2. Lay face down, and fold each corner to the centre.
3. Turn the folded paper over and fold each corner into the centre again.
4. Fold the square in half to crease. Unfold, then fold in the other direction.
5. With 2 hands, slide both thumbs and index fingers under the outer squares.

How to play

1. Ask a friend to pick one of the 4 outer words e.g. **JILA**
2. Open and close in alternating directions to spell out each letter of the word e.g. **J-I-L-A**
3. Then ask a friend to choose an inner word e.g. **water**
4. Open and close in alternating directions to spell out each letter of the word e.g. **w-a-t-e-r**
5. Ask a friend to choose another inner word e.g. **dam** and open the question flap e.g. Q. How many dams supply water to Greater Sydney? and see if their answer is right.



Meet Jila

“Hi, I’m Jila!”

Imagine it: all the water in the world today has gone up and down and round and round for billions of years. It’s the same water the dinosaurs drank. All I can say is WOW!”

Jila and the Wonders of Water Discovery Team can WOW your next community event, shopping centre or cultural festival by sharing a range of interactive activities and games.

To learn more, contact us at education@sydneywater.com.au

Challenge!

Use the grid lines to enlarge Jila.

