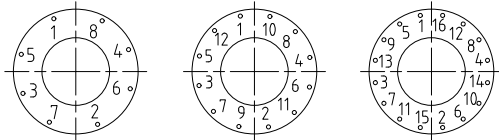


LEGEND  
SS STAINLESS STEEL

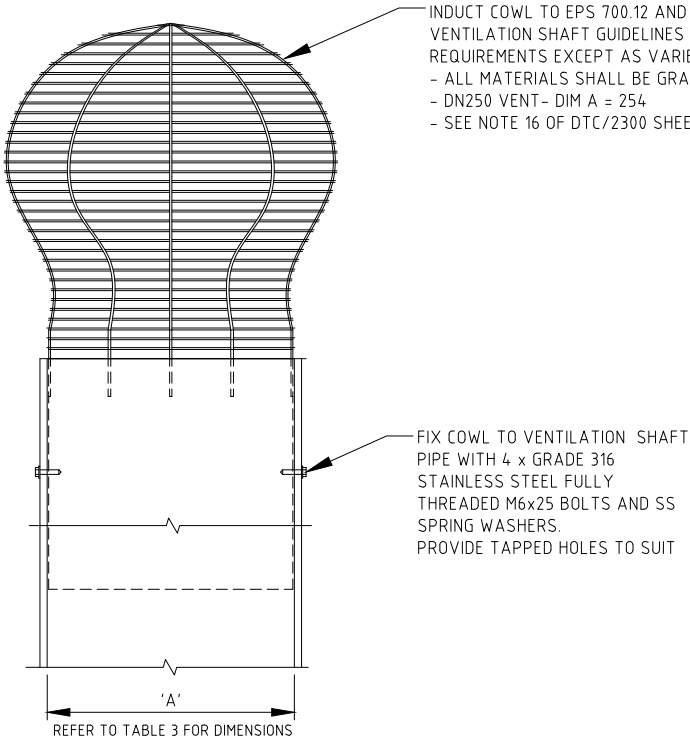
THIS DRAWING MAY ONLY BE USED IN THE COURSE OF AND FOR THE PURPOSE OF CREATING SYDNEY WATER ASSETS. USE THIS DRAWING WITH CARE. THE USER IS RESPONSIBLE FOR THE CORRECT APPLICATION OF THIS DRAWING. DEEMED TO COMPLY DRAWINGS ARE SUBJECT TO TERMS AND CONDITIONS OF USE AS PUBLISHED BY SYDNEY WATER.

- NOTES:
1. THIS DRAWING SHALL BE READ IN IN CONJUNCTION WITH DEEMED TO COMPLY DRAWING DTC/2300 SHEET 1.
  2. BOLTS SHALL BE TIGHTENED USING A TORQUE WRENCH IN THE TIGHTENING SEQUENCE BELOW FOR 8, 12 AND 16 BOLTS. SEQUENCE SHALL BE COMPLETED FIRST FOR 50% AND REPEATED FOR 100% OF FINAL TIGHTENING TORQUE. SEE NOTE 20 ON DTC/2300 SHEET 1 FOR BOLT LUBRICATION REQUIREMENTS.



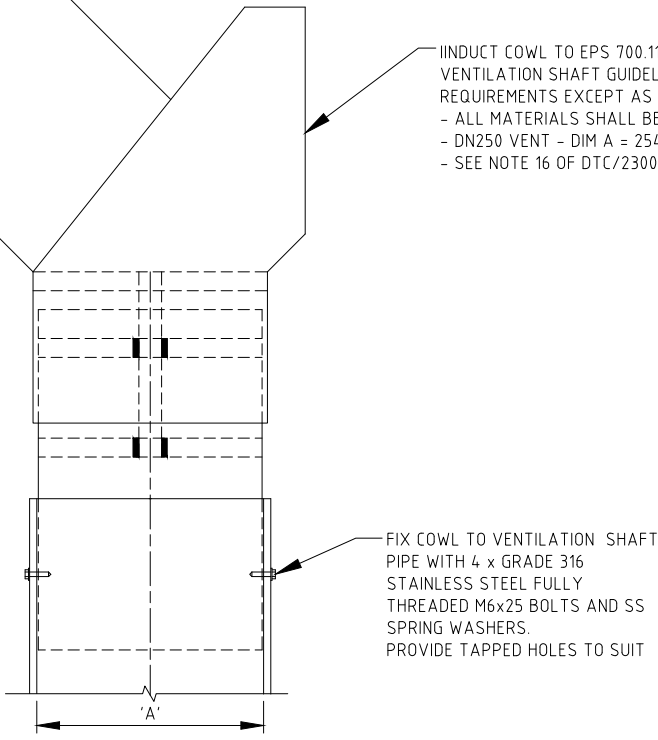
8, 12 AND 16 BOLT TIGHTENING SEQUENCE

INDUCT COWL TO EPS 700.12 AND SYDNEY WATER VENTILATION SHAFT GUIDELINES AND TECHNICAL REQUIREMENTS EXCEPT AS VARIED AS FOLLOWS.  
- ALL MATERIALS SHALL BE GRADE 316 STAINLESS STEEL.  
- DN250 VENT - DIM A = 254  
- SEE NOTE 16 OF DTC/2300 SHEET 1



ELEVATION EDUCT COWL  
SCALE 1:5

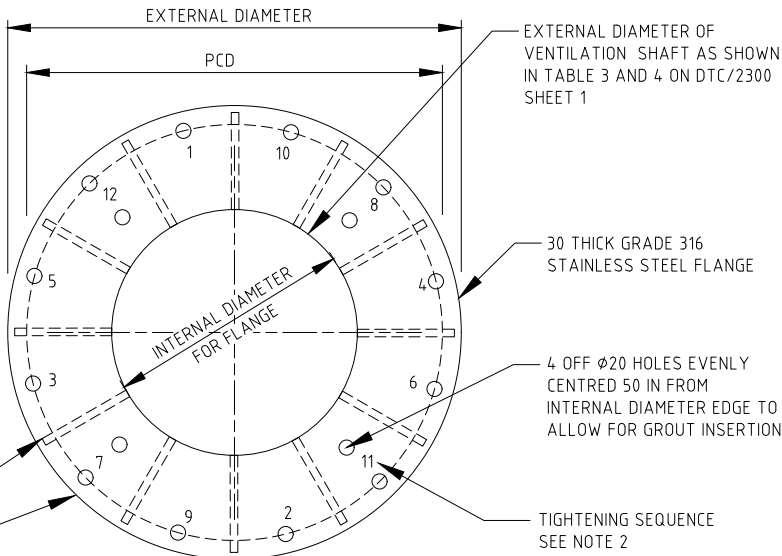
INDUCT COWL TO EPS 700.11 AND SYDNEY WATER VENTILATION SHAFT GUIDELINES AND TECHNICAL REQUIREMENTS EXCEPT AS VARIED BELOW.  
- ALL MATERIALS SHALL BE GRADE 316 STAINLESS STEEL.  
- DN250 VENT - DIM A = 254  
- SEE NOTE 16 OF DTC/2300 SHEET 1



ROTABLE INDUCT COWL DETAIL  
SCALE 1:5

FIX COWL TO VENTILATION SHAFT PIPE WITH 4 x GRADE 316 STAINLESS STEEL FULLY THREADED M6x25 BOLTS AND SS SPRING WASHERS. PROVIDE TAPPED HOLES TO SUIT

FIX COWL TO VENTILATION SHAFT PIPE WITH 4 x GRADE 316 STAINLESS STEEL FULLY THREADED M6x25 BOLTS AND SS SPRING WASHERS. PROVIDE TAPPED HOLES TO SUIT



VENTILATION SHAFT BASE FLANGE  
DETAIL SCALE 1:5

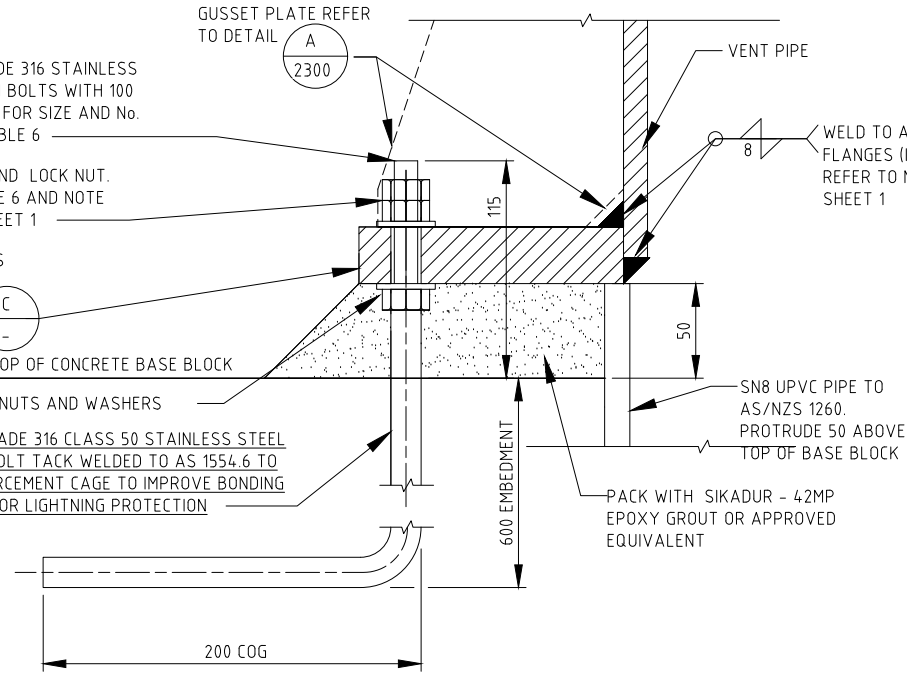
CAST IN-SITU GRADE 316 STAINLESS STEEL HOLD DOWN BOLTS WITH 100 THREAD TO AS1111. FOR SIZE AND No. OFF BOLTS SEE TABLE 6

SS WASHER, NUT AND LOCK NUT. FOR SIZE SEE TABLE 6 AND NOTE 19 ON DTC/2300 SHEET 1

GRADE 316 STAINLESS STEEL BASE FLANGE REFER TO DETAIL

LEVELING NUTS AND WASHERS

CAST IN-SITU GRADE 316 CLASS 50 STAINLESS STEEL HOLDING DOWN BOLT TACK WELDED TO AS 1554.6 TO CENTRAL REINFORCEMENT CAGE TO IMPROVE BONDING AND EARTHING FOR LIGHTNING PROTECTION



VENTILATION SHAFT BASE FLANGE BOLT DETAIL  
DETAIL SCALE 1:2

WELD TO AS 1554.6 TYPICAL FOR ALL FLANGES (INCLUDING UPPER FLANGES) REFER TO NOTES 7 & 10 ON DTC/2300 SHEET 1

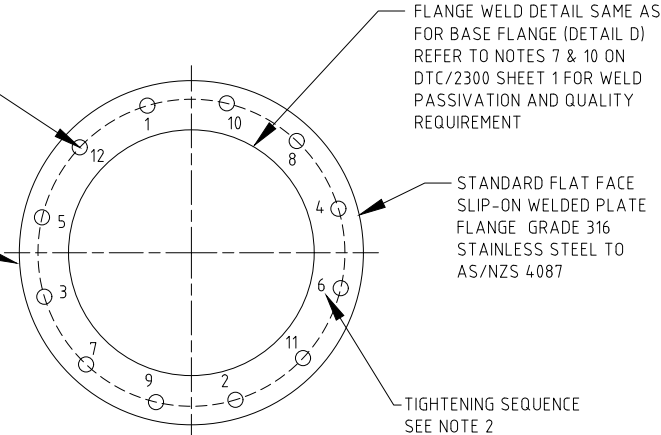
SN8 UPVC PIPE TO AS/NZS 1260. PROTRUDE 50 ABOVE TOP OF BASE BLOCK

PACK WITH SIKADUR - 42MP EPOXY GROUT OR APPROVED EQUIVALENT

TABLE 6 - UPPER FLANGE AND BASE FLANGE DIMENSIONS										
SIZE	UPPER FLANGE				BASE FLANGE					
	STANDARD FLANGE TO AS/NZS 4087	BOLTS No. OFF AND SIZE	SS BOLT CLASS	TIGHTENING TORQUE SEE NOTE 2 (N.m)	EXTERNAL DIAMETER	PITCH CIRCLE DIAMETER (PCD)	BOLTS No. OFF AND SIZE	DIAMETER OF BOLT HOLES	TIGHTENING TORQUE SEE NOTE 2 (N.m)	INTERNAL DIAMETER
DN150	PN35	8/M20	CLASS 50	100	460	400	12/M20	24	10	170.5
DN250	PN21	8/M20	CLASS 70	100	575	500	12/M24	28	25	275.0
DN300	PN21	12/M20	CLASS 70	100	625	550	16/M24	28	25	325.0

USE SS WASHER, NUT AND LOCK NUT. FOR SIZE SEE TABLE 6 AND NOTE 19 ON DTC/2300 SHEET 1

REFER TO TABLE 6 FOR FLANGE DETAILS



VENTILATION SHAFT UPPER FLANGES  
DETAIL SCALE 1:5

FLANGE WELD DETAIL SAME AS FOR BASE FLANGE (DETAIL D) REFER TO NOTES 7 & 10 ON DTC/2300 SHEET 1 FOR WELD PASSIVATION AND QUALITY REQUIREMENT

STANDARD FLAT FACE SLIP-ON WELDED PLATE FLANGE GRADE 316 STAINLESS STEEL TO AS/NZS 4087

TIGHTENING SEQUENCE SEE NOTE 2

Sydney WATER

©COPYRIGHT  
STATE OF NEW SOUTH WALES THROUGH SYDNEY WATER CORPORATION. ALL RIGHTS RESERVED

APPROVED

NORBERT SCHAEFER  
MANAGER - ENGINEERING

ENGINEERING & TECHNICAL SUPPORT

LETTER	DETAILS OF ISSUE / AMENDMENT	APP'D	DATE
D	APPLICABLE HEIGHT RANGE AMENDED. FLANGE CONNECTION CHANGED. GENERAL REVISION	RL	03/11/20
C	APPLICABLE HEIGHT RANGE AMENDED	RL	16/04/13
B	DRAWING No. CHANGED. GENERAL REVISION	RL	01/03/13
A	FINAL ISSUE	PJG	21/12/12

DEEMED TO COMPLY DRAWINGS

VENTILATION SHAFT  
STAINLESS STEEL 9-18m HEIGHT  
DN150 - DN300 SHEET 2 OF 2

DTC  
2301

ISSUE DATE  
D 03/11/20