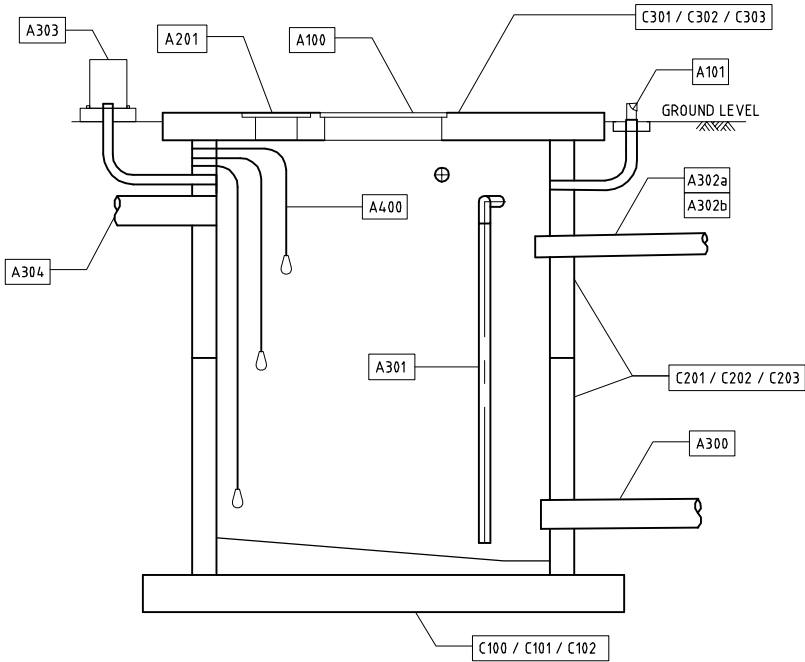


NOTE: THE SECTION ON THIS DRAWING IS 'IDEALISED' TO SHOW ALL THE COMPONENTS IN ONE SECTION ON ONE TANK. THE PLAN HAS BEEN ARRANGED TO MATCH THE SECTION. THIS DRAWING IS FOR COMPONENT DESCRIPTION ONLY AND SHALL NOT BE REFERENCED FOR CONSTRUCTION.

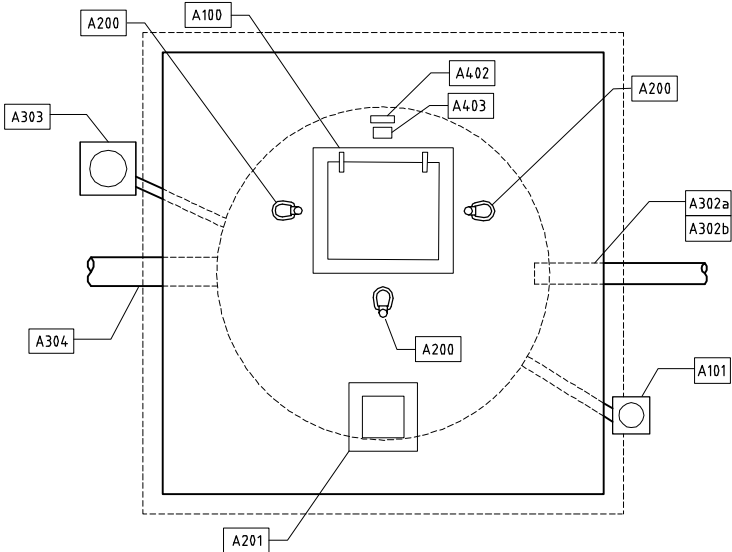
THIS DRAWING MAY ONLY BE USED IN THE COURSE OF AND FOR THE PURPOSE OF CREATING SYDNEY WATER ASSETS. USE THIS DRAWING WITH CARE. THE USER IS RESPONSIBLE FOR THE CORRECT APPLICATION OF THIS DRAWING.

NOTES:

1. THIS DRAWING SHALL BE READ IN CONJUNCTION WITH THE DEEMED TO COMPLY DRAWINGS AS LISTED ON DRAWING DTC/6301.



STORAGE TANK COMPONENTS – SECTION
SCALE 1:25



STORAGE TANK COMPONENTS – ROOF PLAN
SCALE 1:25

COMPONENT ID	DESCRIPTION	SW REFERENCE DESIGN	SUPPLIER PRECAST PRODUCT REFERENCE	
TANK - CONCRETE ASSEMBLY			HUMES	ROCLA
C100	TANK BASE 2400 DIAMETER CAST IN-SITU REINFORCED CONCRETE	DTC/6306		
C101	TANK BASE 3000 DIAMETER CAST IN-SITU REINFORCED CONCRETE	DTC/6306		
C102	TANK BASE 3600 DIAMETER CAST IN-SITU REINFORCED CONCRETE	DTC/6306		
C201	TANK SHAFT RING - DN2400, 1.8m HEIGHT	DTC/6304, DTC/6305	PP-PW-24000B-BLK02-P	D225573
C202	TANK SHAFT RING - DN3000, 1.8m HEIGHT	DTC/6304, DTC/6305	PP-PW-30000B-BLK02-P	D225573
C203	TANK SHAFT RING - DN3600, 1.8m HEIGHT	DTC/6304, DTC/6305	PP-PW-36000B-BLK02-P	-
C301	PRE-CAST ROOF TO FIT DN2400 SHAFT RING WITH OPENINGS FOR ACCESS HATCH, FLOAT SWITCH	DTC/6307	-	-
C302	PRE-CAST ROOF TO FIT DN3000 SHAFT RING WITH OPENINGS FOR ACCESS HATCH, FLOAT SWITCH	DTC/6308	-	-
C303	PRE-CAST ROOF TO FIT DN3600 SHAFT WITH OPENINGS FOR ACCESS HATCH, FLOAT SWITCH	DTC/6309	-	-
TANK - APPURTANANCES				
A100	1050 x 1050 ACCESS HATCH - COVER AND FRAME ASSEMBLY	DTC/3300 , DTC/3301 , DTC/3302 , DTC/3303		
A101	LOW LEVEL INDUCT VENT	DTC/6310		
A200	SAFETY HARNESS ANCHOR	DTC/6310		
A201	FLOAT SWITCH SURFACE BOX WITH 450 x 450 ACCESS HATCH ASSEMBLY	DTC/3300 , DTC/3301 , DTC/3302 , DTC/3303		
A300	INLET PIPE WALL PENETRATION	DTC/6312 (REFER DETAIL B)		
A301	SUCTION PIPEWORK ASSEMBLY	DTC/6312		
A302a	INTERCONNECTING PIPE ASSEMBLY (TANK 1 to TANK 2)	DTC/6312		
A302b	INTERCONNECTING PIPE ASSEMBLY (TANK 2, ANY SUBSEQUENT TANK)	DTC/6312 (Refer A302a)		
A303	ODOUR CONTROL UNIT & PIPEWORK ASSEMBLY	DTC/6312		
A304	OVERFLOW PIPE ASSEMBLY (REFER COMPONENT No. S300)	DTC/6312		
A400	FLOAT LEVEL SWITCHES WITH CABLE, WALL TIES AND THIMBLES ASSEMBLY (x 3)	DTC/6310		
A401	TANK OPERATING BEACON AND MOUNTING	DTC/6310		
A402	TANK LABEL PLATE	DTC/6311		
A403	CONFINED SPACE SIGN	DTC/6311		

NOTES:

1. SYDNEY WATER HAS UNDERTAKEN A DESKTOP TECHNICAL ASSESSMENT TO CONFIRM SUITABILITY OF LISTED SUPPLIER PRODUCTS BASED ON LIMITATIONS SET OUT IN THE DRAWINGS.
2. THE USER SHALL VERIFY AND CONFIRM ALL DIMENSIONS AND LEVELS WITH THE SUPPLIER PRIOR TO MANUFACTURE OF PRECAST PRODUCTS.
3. THE USER IS RESPONSIBLE FOR QUALITY ASSURANCE OF THE SELECTED PRECAST PRODUCT.