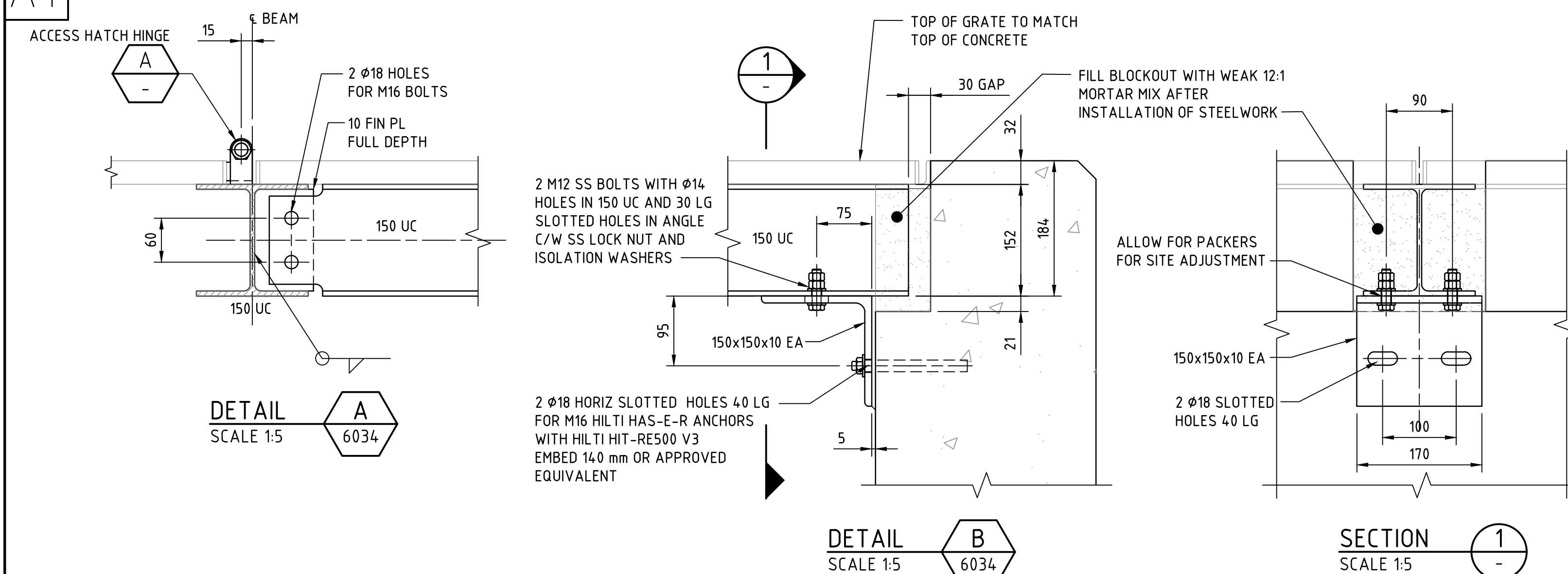


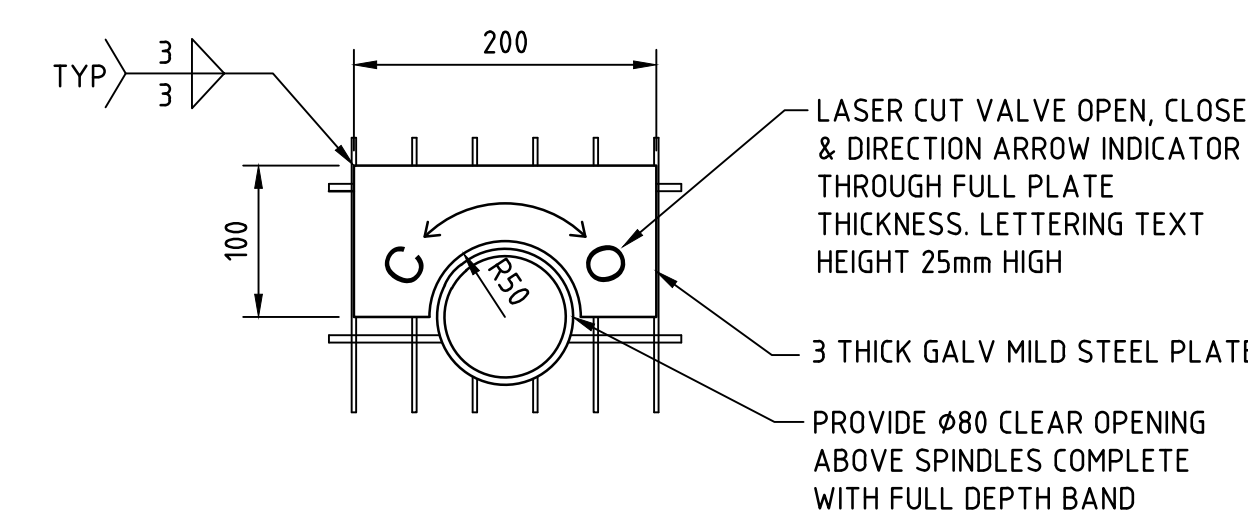
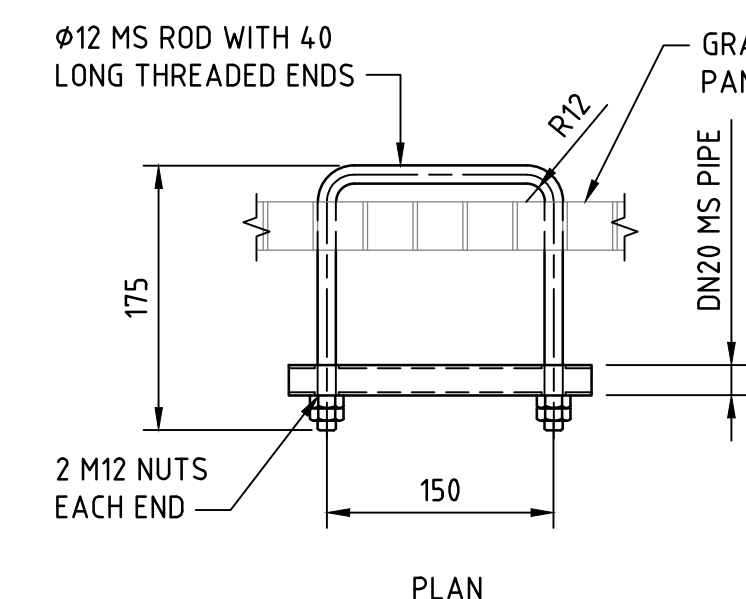
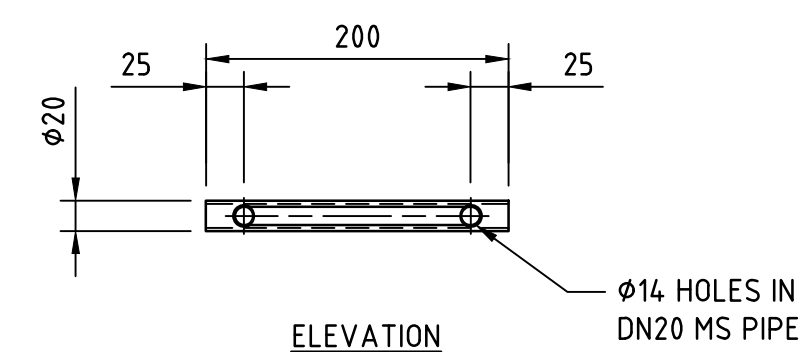
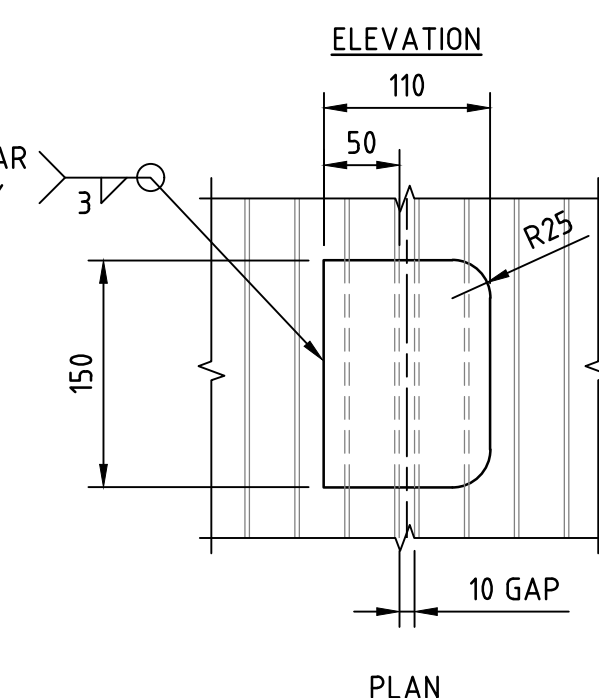
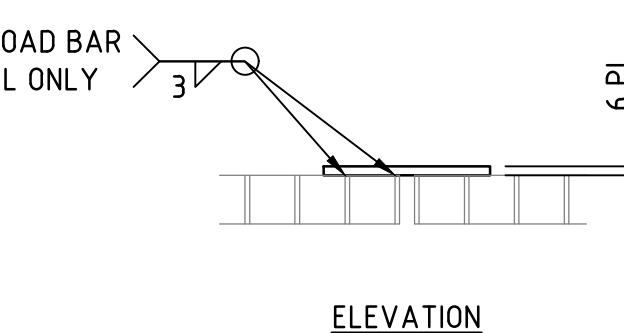
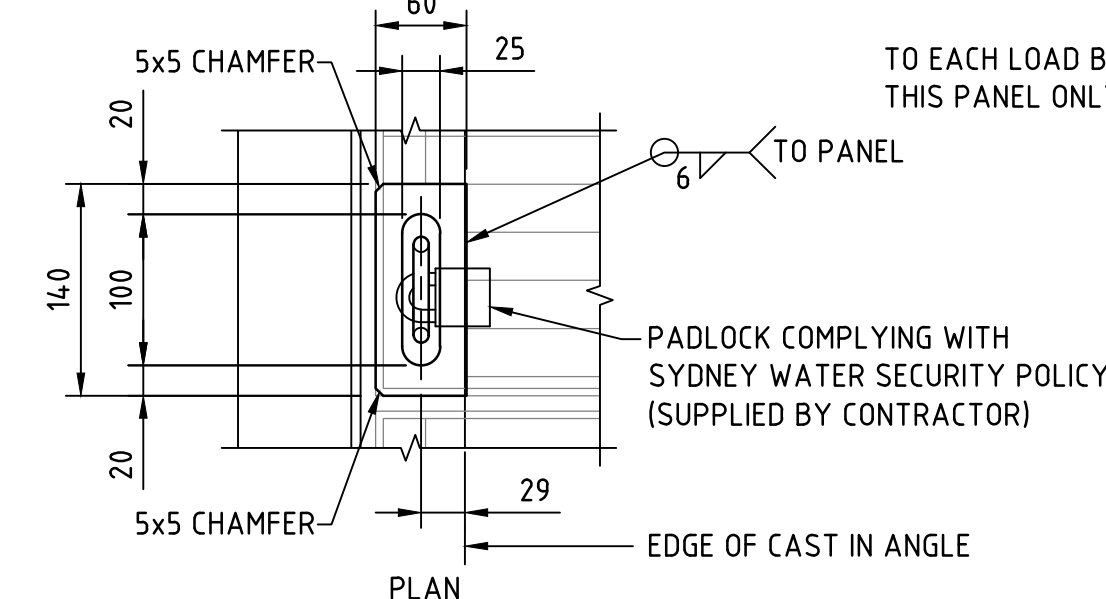
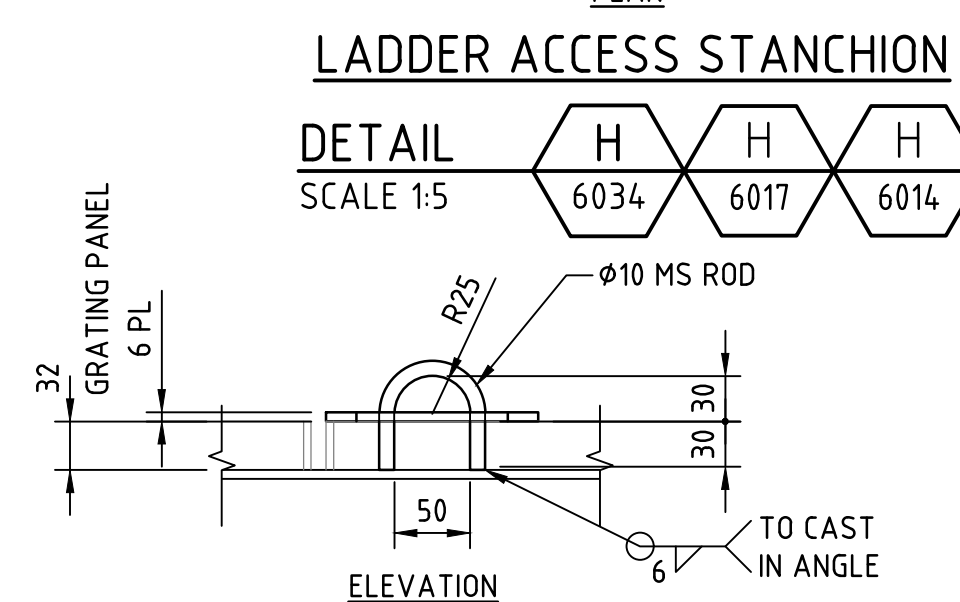
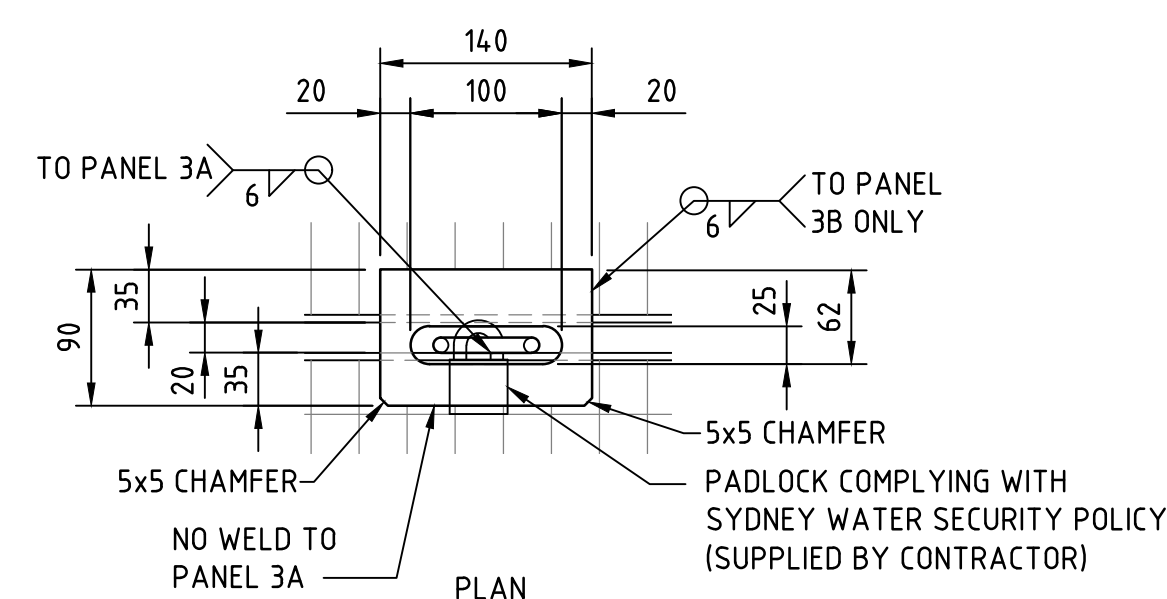
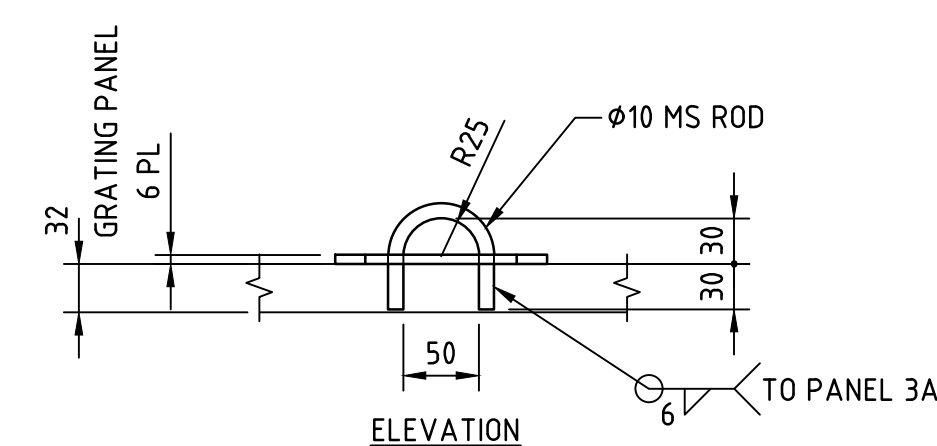
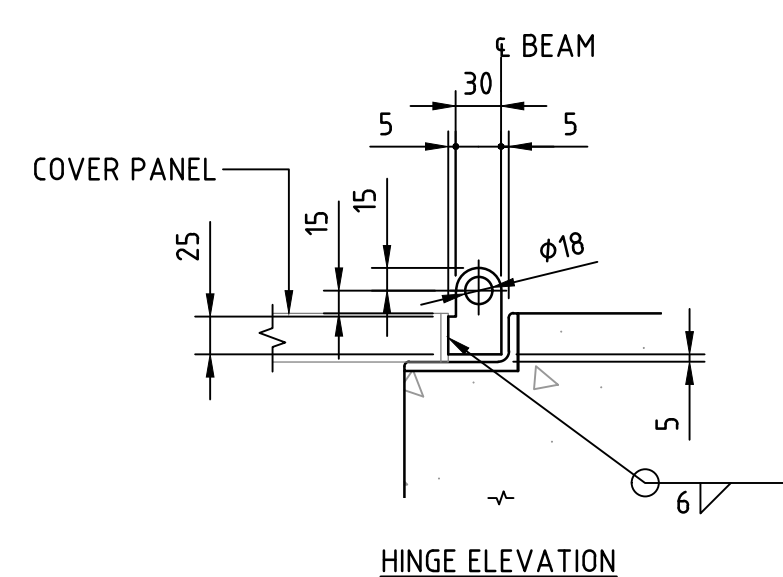
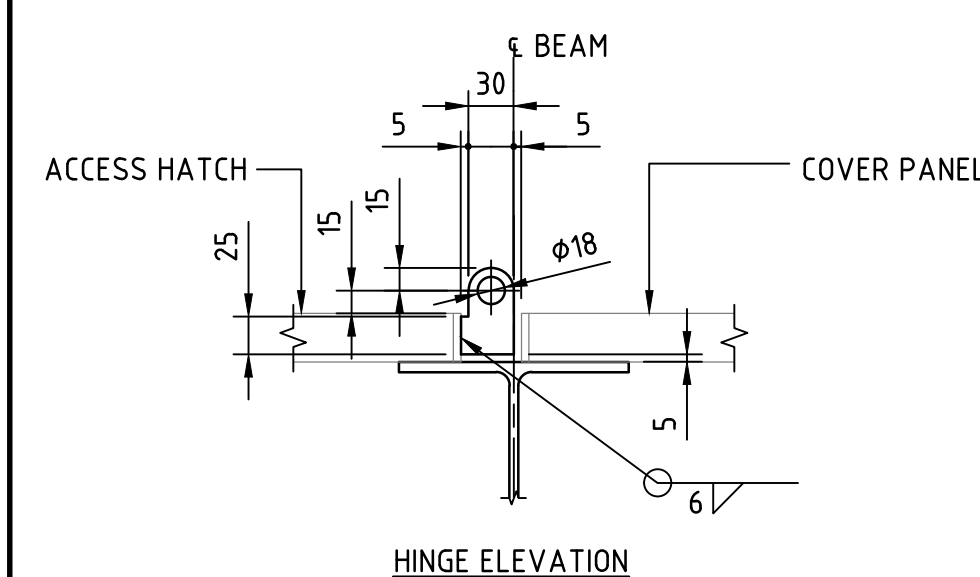
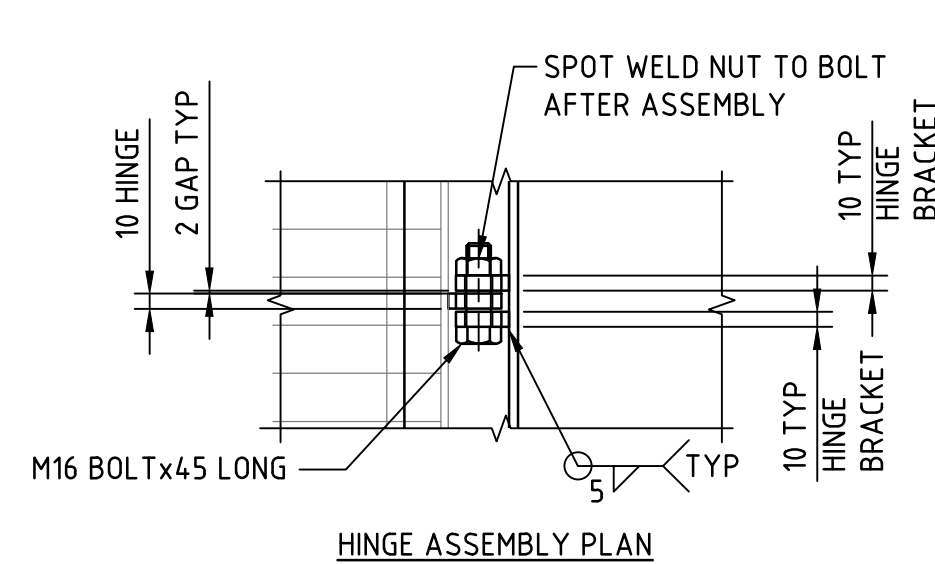
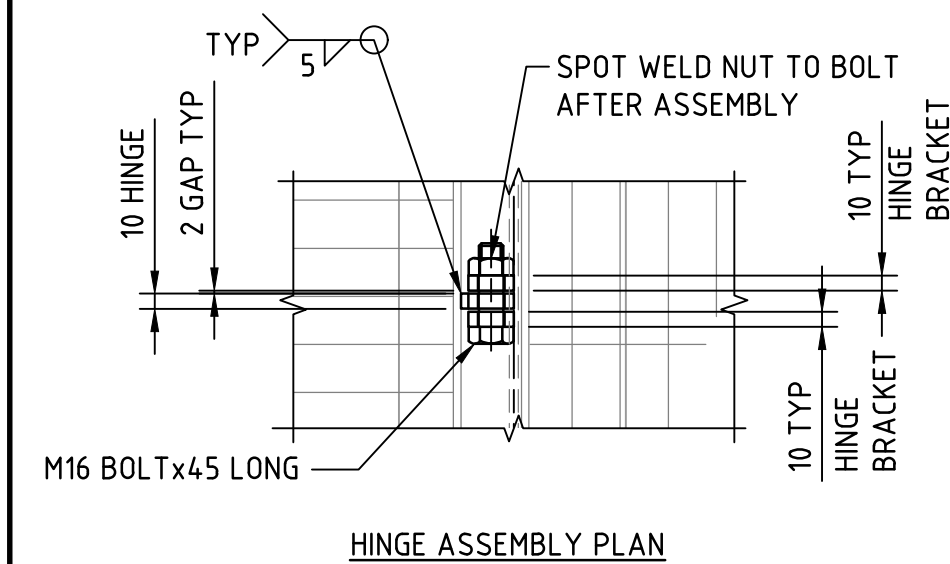
THIS DRAWING MAY ONLY BE USED IN THE COURSE OF AND FOR THE PURPOSE OF CREATING SYDNEY WATER ASSETS.
USE THIS DRAWING WITH CARE. THE USER IS RESPONSIBLE FOR THE CORRECT APPLICATION OF THIS DRAWING
THE USE OF DTC DRAWINGS IS SUBJECT TO TERMS AND CONDITIONS AS PUBLISHED BY SYDNEY WATER.

NOTES:


1. REFER TO DRAWING DTC/6001 FOR GENERAL NOTES.
2. THIS DRAWING TO BE READ IN CONJUNCTION WITH DRAWINGS DTC/6015 AND DTC/6034.
3. ALL METALWORK TO BE HOT DIP GALVANISED AFTER FABRICATION TO AS 4680, WSA 201 AND SYDNEY WATER SUPPLEMENT.
4. "ZRE" (AS PER WSA201- AND SYDNEY WATER SUPPLEMENT) TO BE USED FOR REPAIR OF DAMAGED GALVANISED STEEL.
5. ALL WELDS TO BE 6mm CONTINUOUS FILLET WELD ALL ROUND UNLESS NOTED OTHERWISE AND CONFORM TO SWC TECHNICAL SPECIFICATION - CIVIL.



TYPICAL COVER SUPPORT BEAM INSTALLATION



SPINDLE ACCESS COVER AND INDICATOR PLATE

DETAIL  J
SCALE 1:5 6034

LADDER ACCESS STANCHION

DETAIL

SCALE 1:5

H 6034 H 6017 H 6014

ACCESS HATCH HINGE

DETAIL A

SCALE 1:5

GRATING COVER HINGE

DETAIL
SCALE 1:5

GRATING COVER LOCKING CLEAT

DETAIL	D
SCALE 1:5	6034

ACCESS HATCH LOCKING CLEAT

DETAIL
SCALE 1:5

RESTRAINING PLATE

DETAIL F

SCALE 1:5

6034

GRATING COVER HANDLE

DETAIL  G
SCALE 1:5  6034

Sydney WATER

© COPYRIGHT
STATE OF NEW SOUTH WALES THROUGH SYDNEY
WATER CORPORATION. ALL RIGHTS RESERVED

APPROVED

NORBERT SCHAEFER
MANAGER - ENGINEERING

ENGINEERING & TECHNICAL SUPPORT

DEEMED TO COMPLY DRAWINGS

SEWAGE PUMPING STATION
VALVE CHAMBER - ACCESS HATCH & COVERS
SUPPORT STEELWORK & COVER DETAILS

DTC

6035

ISSUE	DATE
-------	------

 Δ

DATE _____

25 / 06 / 21