

Austral Leppington

Delivering our water future

Sydney Water is delivering a transformative investment in our city to ensure our water, wastewater and stormwater systems meet the needs of our customers now and in the future.

Our infrastructure delivery is timed to support the NSW Government's growth ambitions and is aligned with housing supply policy. New infrastructure, amplifications and upgrades will ensure the resilience and reliability of our water supply for generations to come.

The expansive program of work is being delivered across Greater Sydney, including the Blue Mountains and the Illawarra. A significant number of projects are currently in planning, while many are in delivery or have been completed.

Explore the [Major Projects Pipeline](#).

Sydney Water is providing safe and reliable drinking water and wastewater services to support growth in the Austral and Leppington precincts. Phase 1 of the project has been completed and is an interim delivery solution providing wastewater infrastructure to service up to 1700 lots located in the area. Phase 1 included the construction and operation of:

- new wastewater pumping station
- permanent access road within the pumping station
- 1.7 km of wastewater pressure main
- 13.3 km of trunk wastewater mains

- 3.2 km of wastewater lead-ins
- 3.9 km of trunk water mains
- maintenance holes, vent shafts and access tracks.

Phase 2 will provide additional wastewater infrastructure, split into three worklots. Servicing is linked to the operation of the Advanced Water Recycling Centre, due for completion in 2026.

Final wastewater infrastructure for the entire catchment is expected to be in place in 2027, with ultimate servicing of 38,000 lots expected by 2056.

Investment



**\$207.3 million
(Phase 1)**

**\$55 million
(Phase 2A)**



Benefits for our customers and communities



Efficient and cost-effective wastewater services



15,200 jobs supported by 2056



Reliable wastewater services to support 38,000 lots by 2056



Produce biosolids for an alternative to chemical fertilisers in agriculture

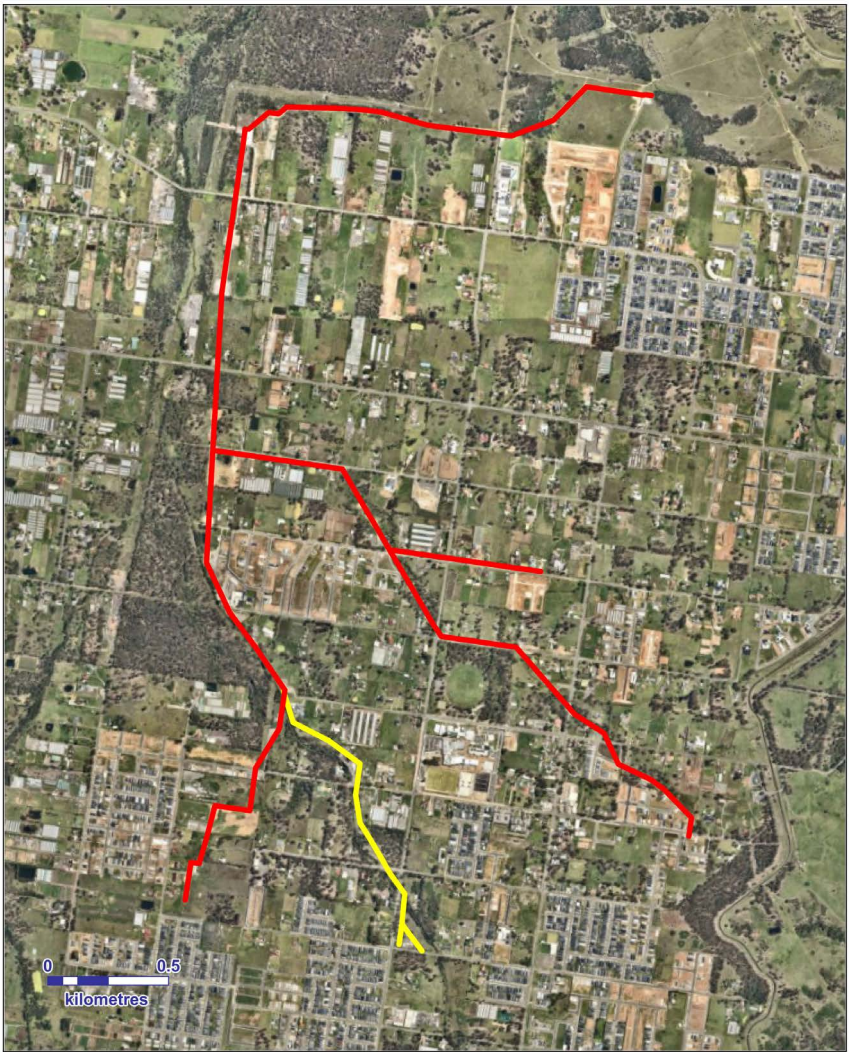


Rainfall independent water supply for residences, business, industry, agriculture and irrigation



Protect local waterways, including the Nepean River, and aquatic ecosystems via environmental flows

Location



Legend
— Installed Austral Leppington Wastewater Infrastructure
— Proposed Bonds Creek Carrier Extension



Copyright © 2024
Sydney Water
NSW Department of Planning, Industry & Environment
NSW Spatial Services
Australian Government Department of Environment
NearMaps
Date Created: 12/02/2024



Project timeline



Contact us

Website sydneywater.com.au

Email australwastewater@sydneywater.com.au

Phone 1300 653 817
(9 am – 5 pm, Monday – Friday)

Interpreter service 13 14 50

This information is correct at the time of printing.

Please visit sydneywater.com.au for the latest updates.