

NOTES:

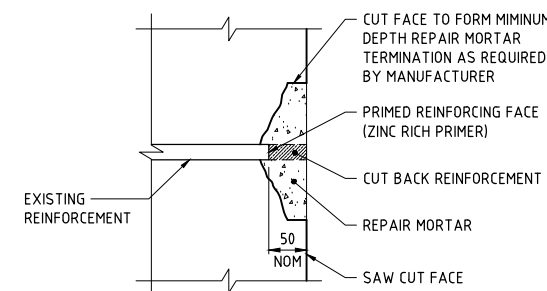
- THIS DRAWING SHALL BE READ IN CONJUNCTION WITH THE FOLLOWING:
 - DTC/2000 - MAINTENANCE HOLES, CONSTRUCTION NOTES
 - DTC/2401 - EMERGENCY RELIEF STRUCTURE: INSTRUCTIONS, GENERAL NOTES & DRAWING LIST
 - DTC/2407 - EMERGENCY RELIEF STRUCTURE: ARRANGEMENT 4A/B/C - INLINE CHECK VALVE
- THE FOLLOWING COVERS SHALL BE PROVIDED FOR THIS DESIGN:

CLASS B - GATIC COVER GM302C6112B
AREAS WITHIN PRIVATE PROPERTIES, AND PUBLIC SPACES, PEDESTRIAN MALLS AND FOOTWAYS NOT SUBJECTED TO VEHICULAR LOADING OR HAVE NO ACCESS FOR VEHICLES.

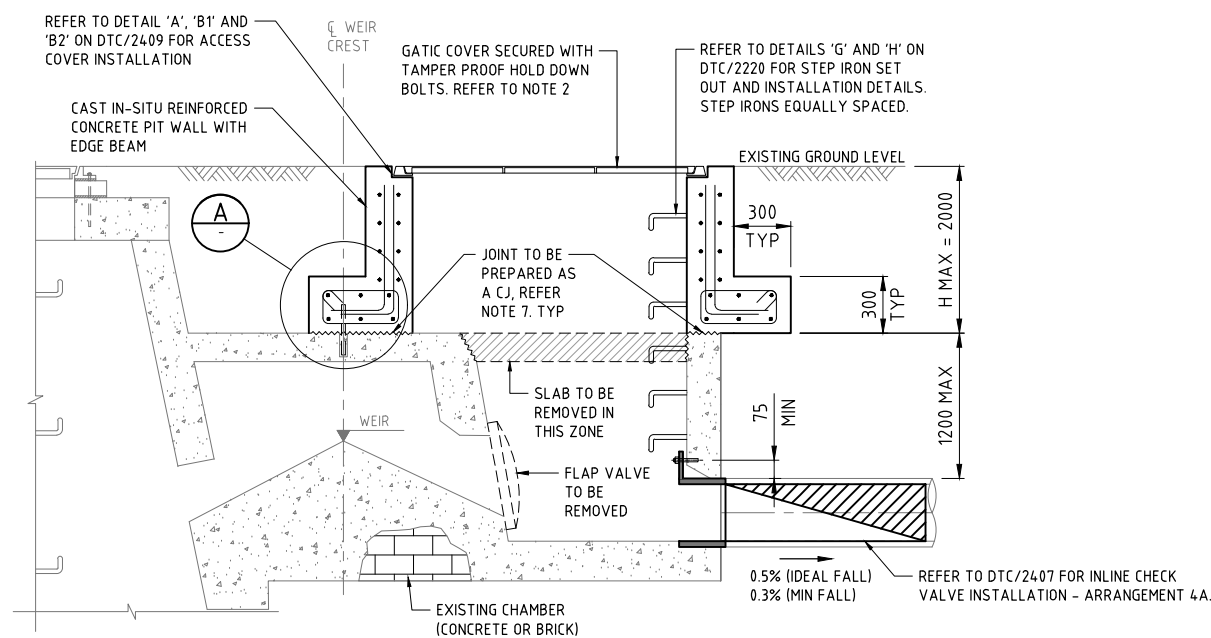
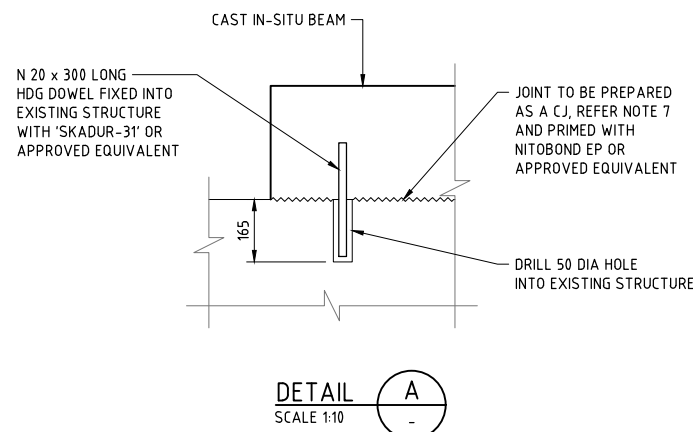
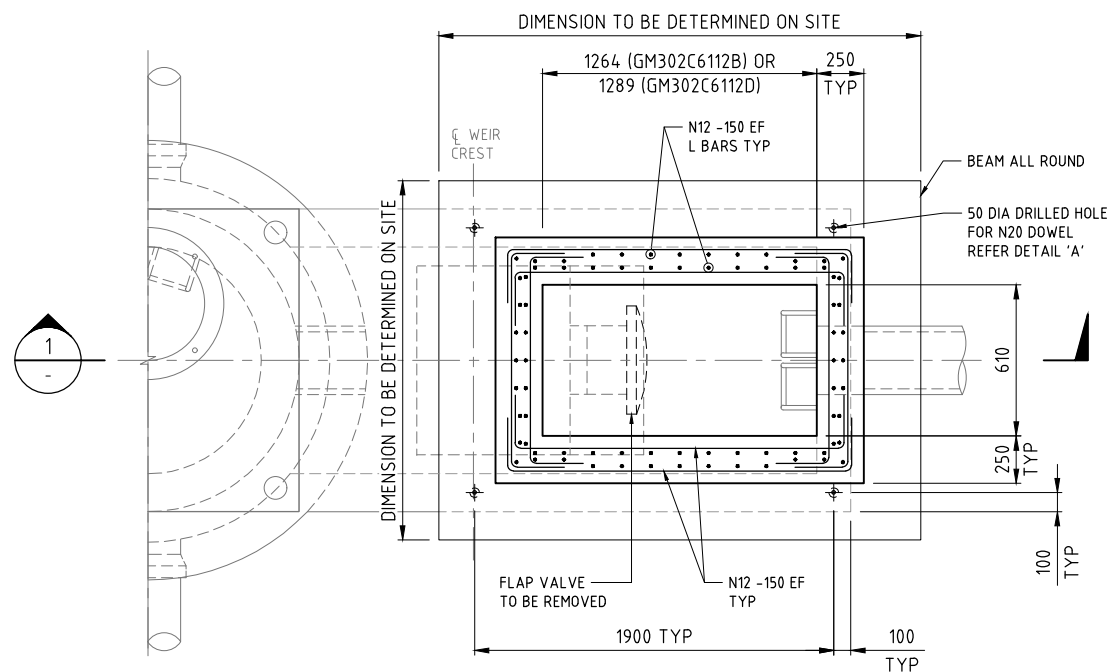
CLASS D - GATIC COVER GM302C6112D
FOOTWAYS AND DRIVEWAYS IN AREAS ZONED RESIDENTIAL NOT RESTRICTED TO VEHICLES, AND PARKLAND WITH NO RESTRICTION TO VEHICULAR ACCESS.
- EDGES SHALL BE CHAMFERED 20x20 AND RE-ENTRANT CORNERS FILLETED 20x20 UNLESS SPECIFIED OTHERWISE.
- SPECIALIST STRUCTURAL ENGINEERING ASSESSMENT OF THE EXISTING SEWER MAINTENANCE HOLE SHALL BE CARRIED OUT TO DETERMINE REMAINING SERVICE LIFE AND THE REQUIREMENT OF PROTECTIVE COATING/LINING FOR THE NEW VALVE CHAMBER. IF REQUIRED, COATING SHALL BE EUH ON NEW CHAMBER ROOF AND WALLS.
- REQUIRED CONCRETE CLASS S40.
- REQUIRED CONCRETE COVER TO REINFORCEMENT: INTERNAL FACES 75 mm, FACES AGAINST GROUND 45 mm.
- PREPARATION OF SURFACE AT CONSTRUCTION JOINTS TO COMPLY WITH SECTION C3.13.2 OF TECHNICAL SPECIFICATION - CIVIL: DOCUMENT NO. CPDMS0023. THE SURFACES OF PREVIOUSLY PLACED CONCRETE AT CONSTRUCTION JOINTS MUST BE ROUGHENED BY REMOVING ALL LOOSE AGGREGATE, LAITANCE AND SUFFICIENT MORTAR TO EXPOSE AGGREGATES TO A DEPTH OF 3 mm.
- DOWELS SHALL BE HOT-DIP GALVANIZED IN COMPLIANCE WITH AS/NZS 4680.

PROTECTION TO CUT REINFORCING:

- APPROVED ALTERNATIVE PROPRIETARY PRODUCTS TO THOSE STATED BELOW MAY BE USED. ALL PRODUCTS TO BE APPLIED IN COMPLIANCE WITH THE MANUFACTURER'S REQUIREMENTS.
- ONCE CONCRETE SURFACE IS CUT BACK, SEVERED, AND LOCALLY EXPOSE REINFORCING IS TO BE PROTECTED BY (SEE DIAGRAM BELOW):
 - EXPOSING EACH REINFORCING BAR TO AN EXTENT OF AT LEAST 50 mm BY REMOVING SURROUNDING CONCRETE.
 - PRIME ALL EXPOSED REINFORCING SURFACES WITH 'FOSROC NITOPRIME ZINCRICH'.
 - CONCRETE SURFACES SHOULD BE SOAKED, AND ANY EXCESS WATER REMOVED.
 - PRIME THE CONCRETE SURFACES WITH 'FOSROC NITOBOND HAR'.
 - PLACE SHUTTERS, IF REQUIRED, AND APPLY 'FOSROC RENDEROC HB70' TO THE CONCRETE FACE ENSURING A COVER OF 50 mm IS ACHIEVED TO THE REINFORCING.
 - APPLY CURING COMPOUND AFTER REMOVING THE SHUTTER.

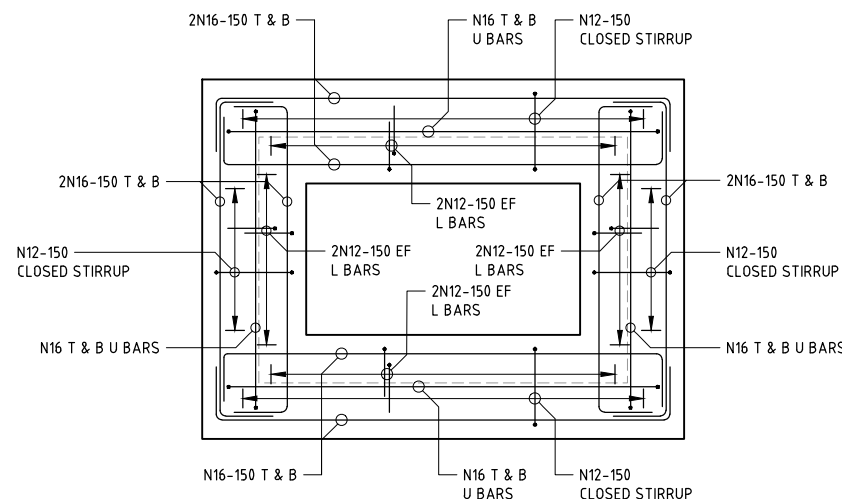
**SECTION THROUGH TYPICAL REPAIR**

SCALE 1:5

**SECTION 1**
SCALE 1:20**DETAIL A**
SCALE 1:10**ARRANGEMENT 5 - PLAN**

SCALE 1:20

BEAM REINFORCEMENT BARS NOT SHOWN FOR CLARITY

**BEAM REINFORCEMENT LAYOUT**

SCALE 1:20

Sydney
WATER© COPYRIGHT
STATE OF NEW SOUTH WALES THROUGH SYDNEY
WATER CORPORATION. ALL RIGHTS RESERVED

APPROVED

DINESH DINESHHARAN
MANAGER - ENGINEERING

ENGINEERING & TECHNICAL SUPPORT

DEEMED TO COMPLY DRAWINGS

**EMERGENCY RELIEF STRUCTURE
ARRANGEMENT 5 - RAISING BURIED
CHAMBER - GA & SECTION****DTC**
2408ISSUE
A DATE
14/09/21