

Every drop counts

Stage 1

Exploring how we use and save water every day



Lesson 1

How we use water

Activity 1: Wondering about water



Have you ever wondered...



Do we need water every day?

Why and what for?

Do we use a little or a lot?

Does it matter?

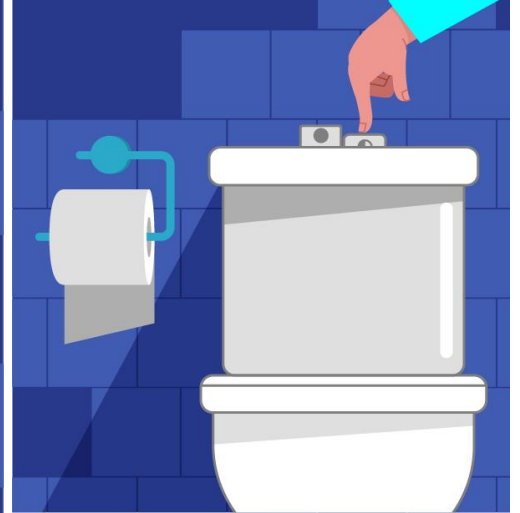
Lesson 1

How we use water

Activity 2: Do we use water everyday?

Thinking about your day...

When did you use water?



Morning



Afternoon



Night

Create your own water timeline

Sydney WATER

My water timeline

1 day

Name: _____

The diagram illustrates a 24-hour water cycle. It features a central vertical dashed line representing the midday transition. To the left of this line, under the 'Morning' section, are two boxes: one showing a hand flushing a toilet and another showing hands being washed at a sink. To the right of the line, under the 'Afternoon' and 'Night' sections, are two boxes: one showing a person taking a bath and another showing hands being washed at a sink. A horizontal arrow at the bottom indicates the progression of time from Morning (with a sun icon) to Night (with a moon and stars icon).

Morning

Afternoon

Night

My water timeline | © Sydney Water. All rights reserved

Page 2 | 2

How important is water?

What would happen if there was no water?

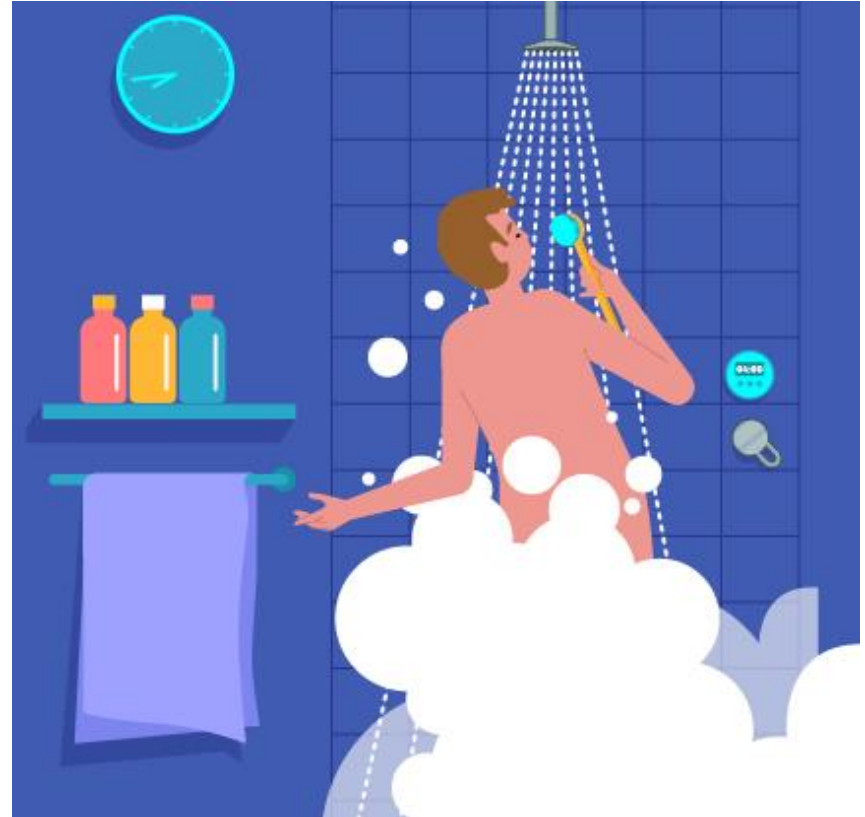
Could you...

eat dinner?

wash your hair?

flush the toilet?

What else couldn't you do

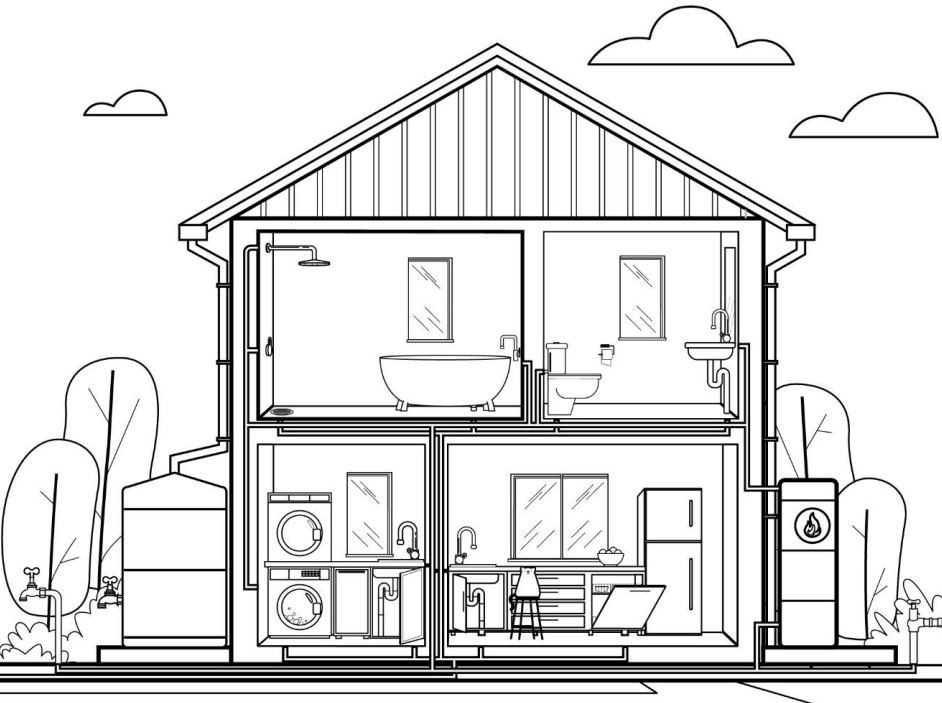


Lesson 1

How we use water

Activity 3: How do we use water?

**Our homes may look different,
but they all have water**

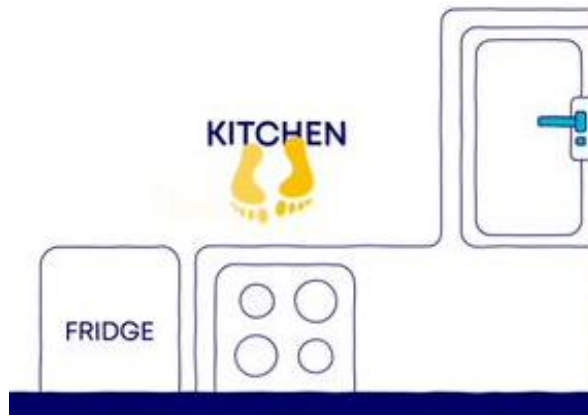


Let's explore how we use water in our home



In the kitchen

We use water to ...



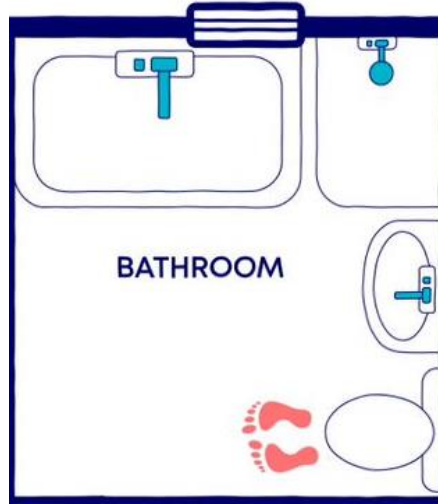
In the laundry

We use water to...



In the bathroom

We use water to...



Can you think of more 



What about at school?

Do we use water the same or differently?

Water at home



Water at school



Click and use the [How do we use water?](#)

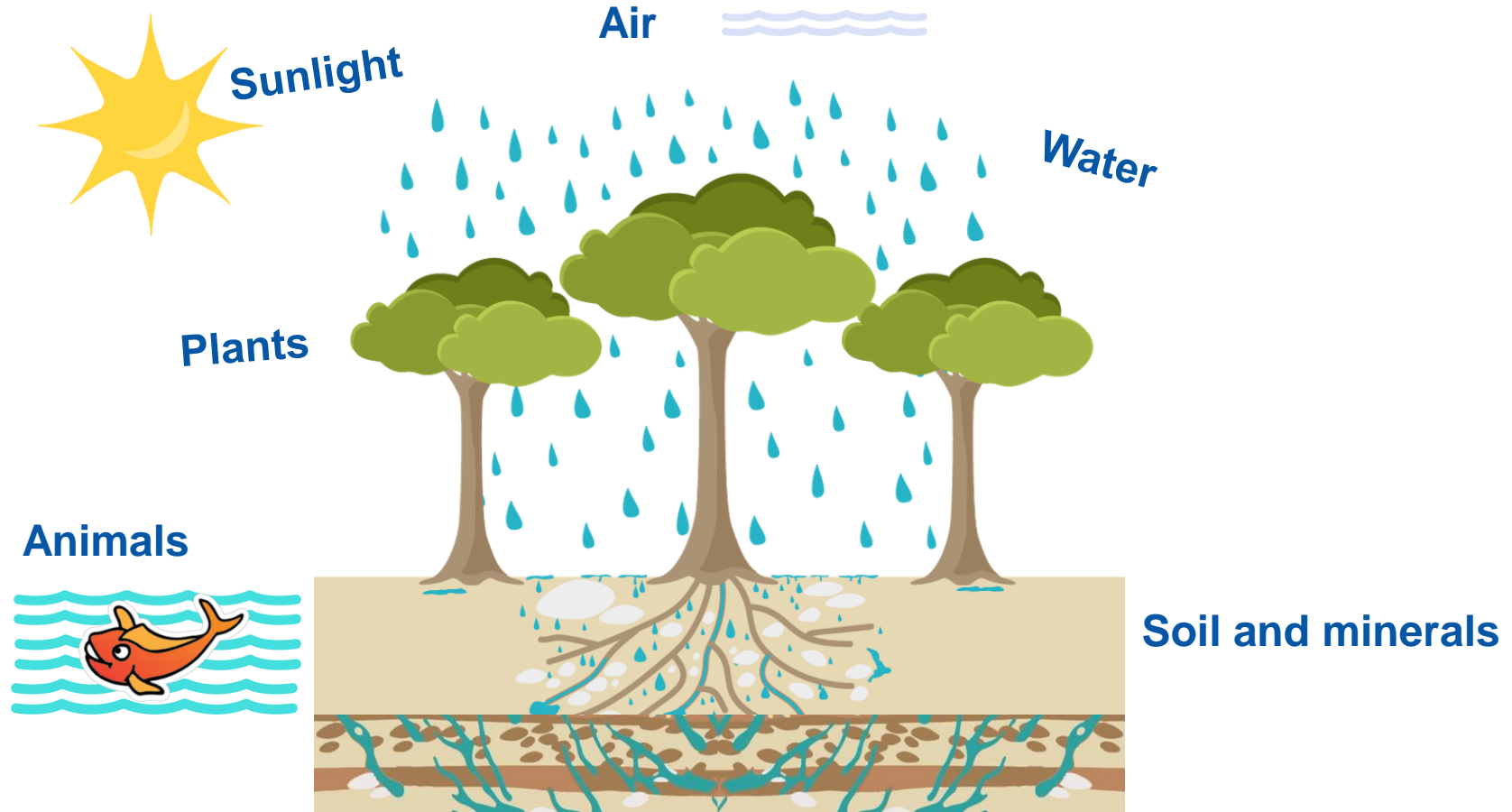


Lesson 1

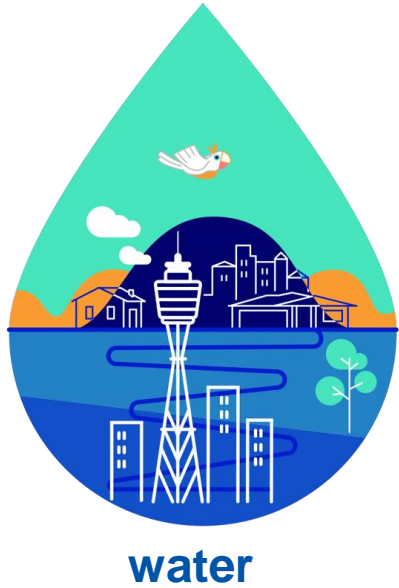
How we use water

Activity 4: Does water help us make and do things?

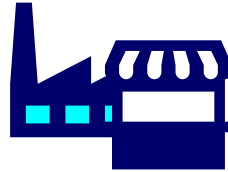
Water is one of Earth's natural resources



We use it to make and grow things



farmers grow crops



factories and shops



It takes



2000 litres of water to make a cotton t-shirt.



170 litres of water to grow oranges to make one glass of orange juice.

Sydney
WATER

It takes
3 litres of
water
to make
one litre of
bottled water

A diagram illustrating the water footprint of bottled water. It features a large blue pitcher with a handle on the left and a smaller clear plastic water bottle on the right. The pitcher is filled with water and has the text '3L' written on it in green. The bottle is also filled with water and has the text '1L' written on it in blue. A blue vertical line with an equals sign is drawn between the two containers, indicating that the water in the pitcher is equivalent to the water in the bottle. The background is a light blue sky with a wooden surface at the bottom.

What other things use water?

Technology

Energy

Clothing

Medicine

Food

Transport



What jobs use water?

Hairdresser



Barista



Window cleaner



Café staff

Dentist



Horticulturist



Firefighter



Scientist



Lesson 2

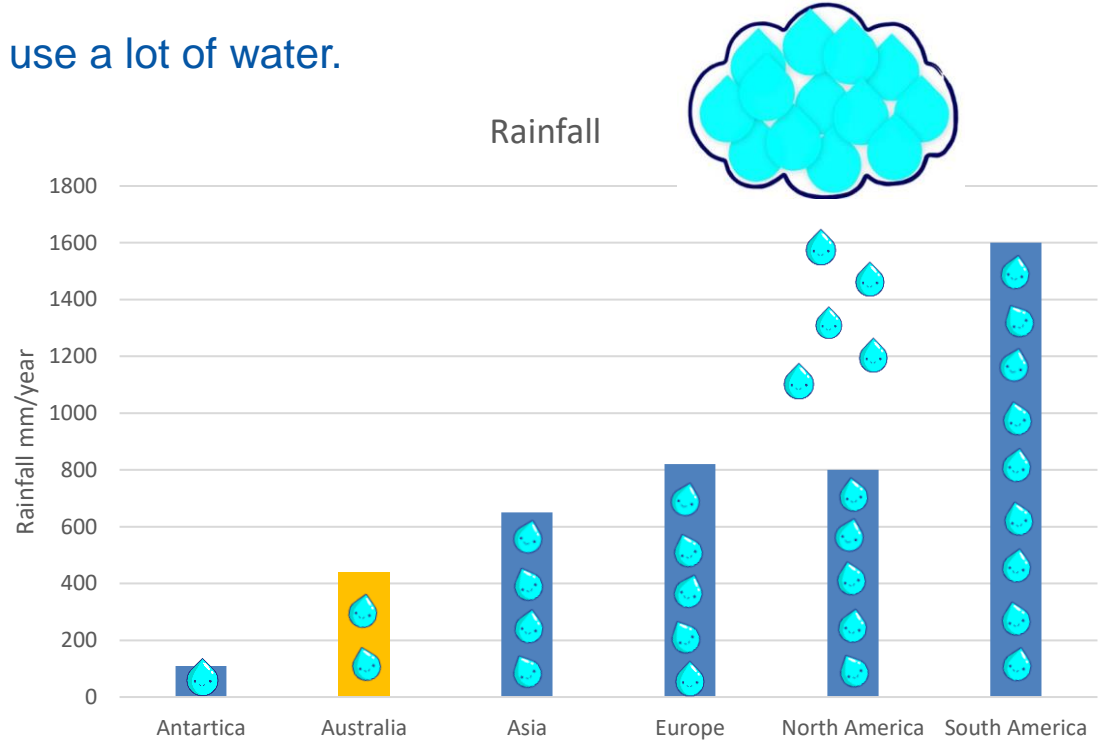
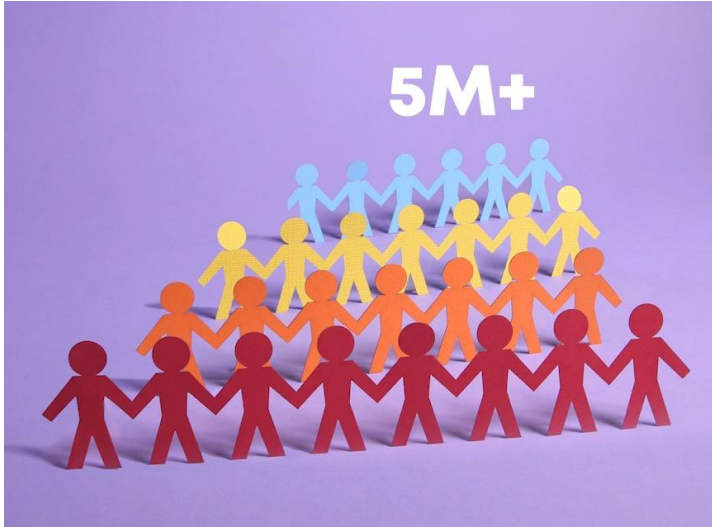
Every drop counts

Activity 1: How can we save water?

Did you know?

We live on one of the driest continents in the world.

Our population is growing and we use a lot of water.



What do you think

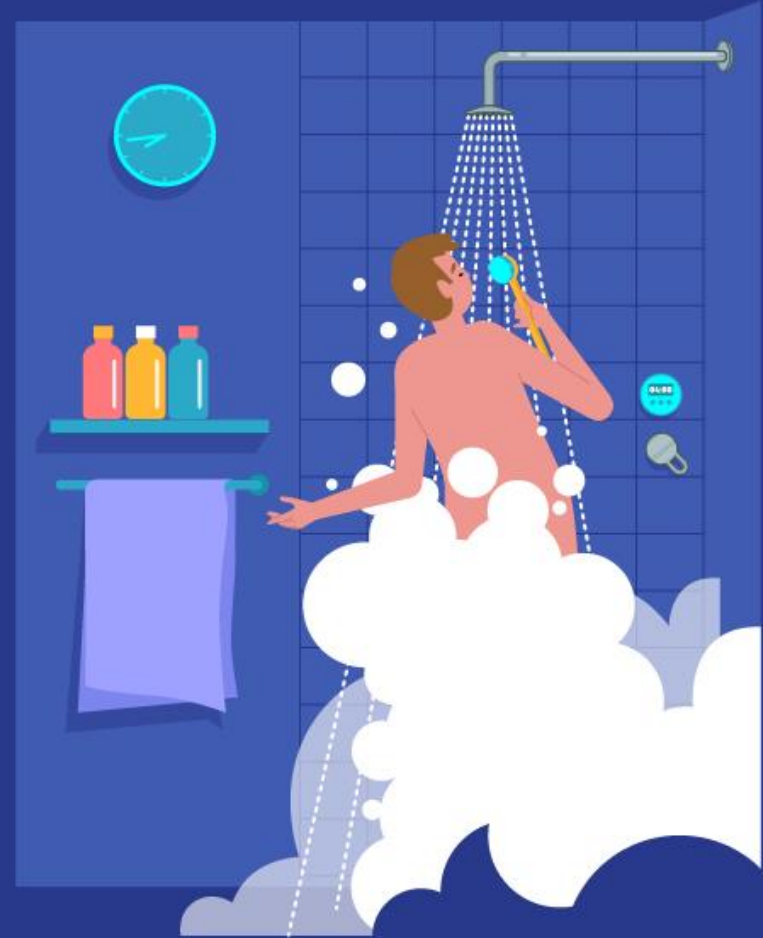


Is it important that we care for water and share water with people and nature?



Did you know?

Most water is wasted in the shower!



In fact...

The shower is the thirstiest water outlet in your home!

It uses more water than any other device!

4 minute timer



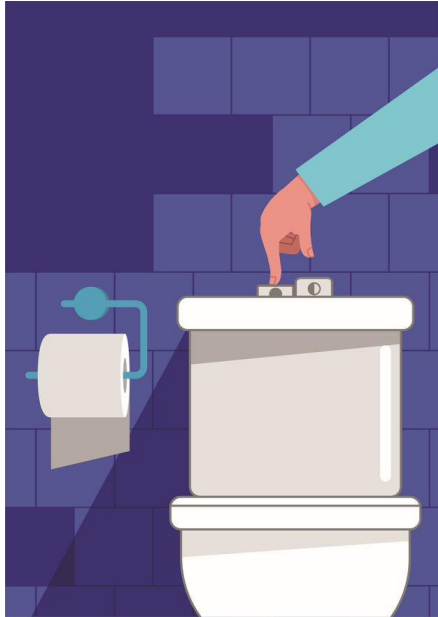
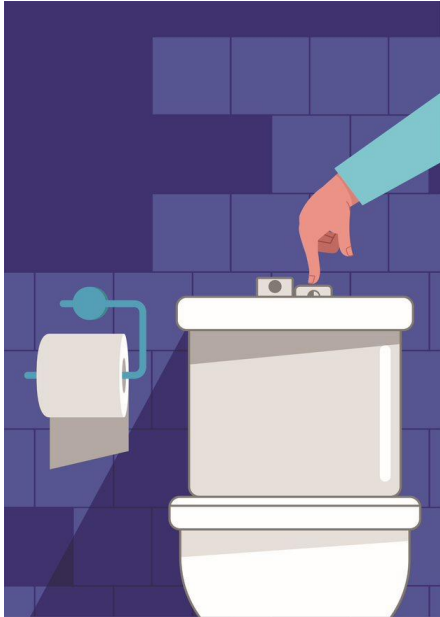
How can you be more water efficient?



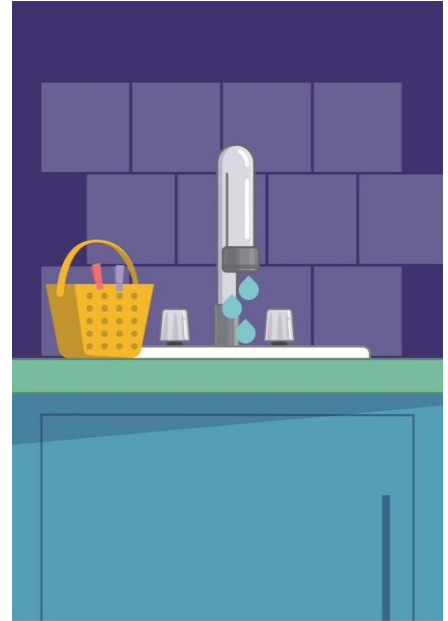
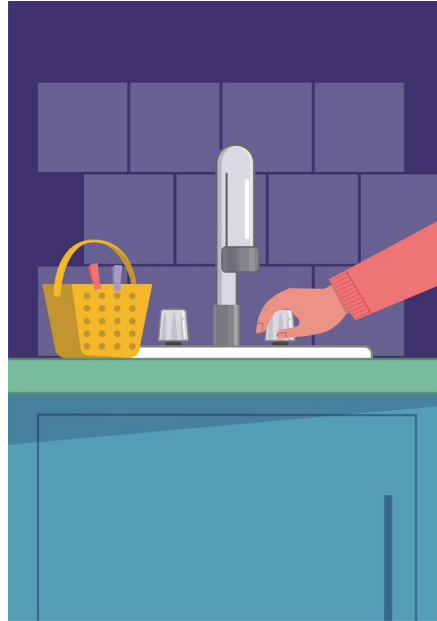
Which one should we choose?



Half flush or full flush?



Closing tap or dripping tap?

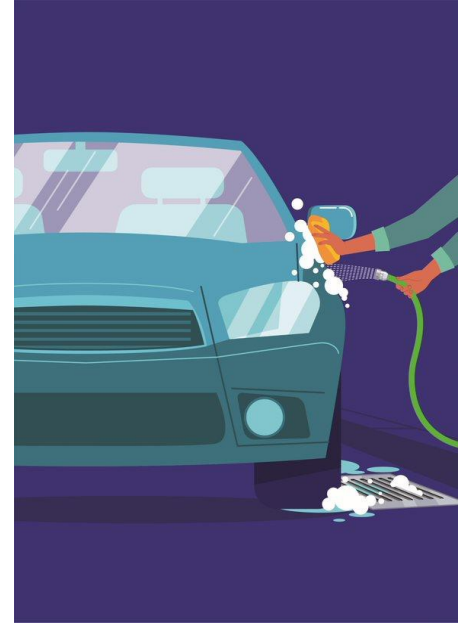
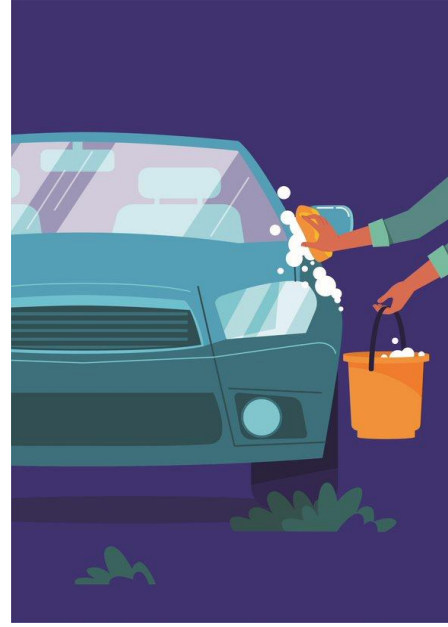


Which one should we choose?



Short shower or long shower?

Bucket and lawn or hose and drain?



Lesson 3

School mini water audit

Activity 1: How can we save water at school?

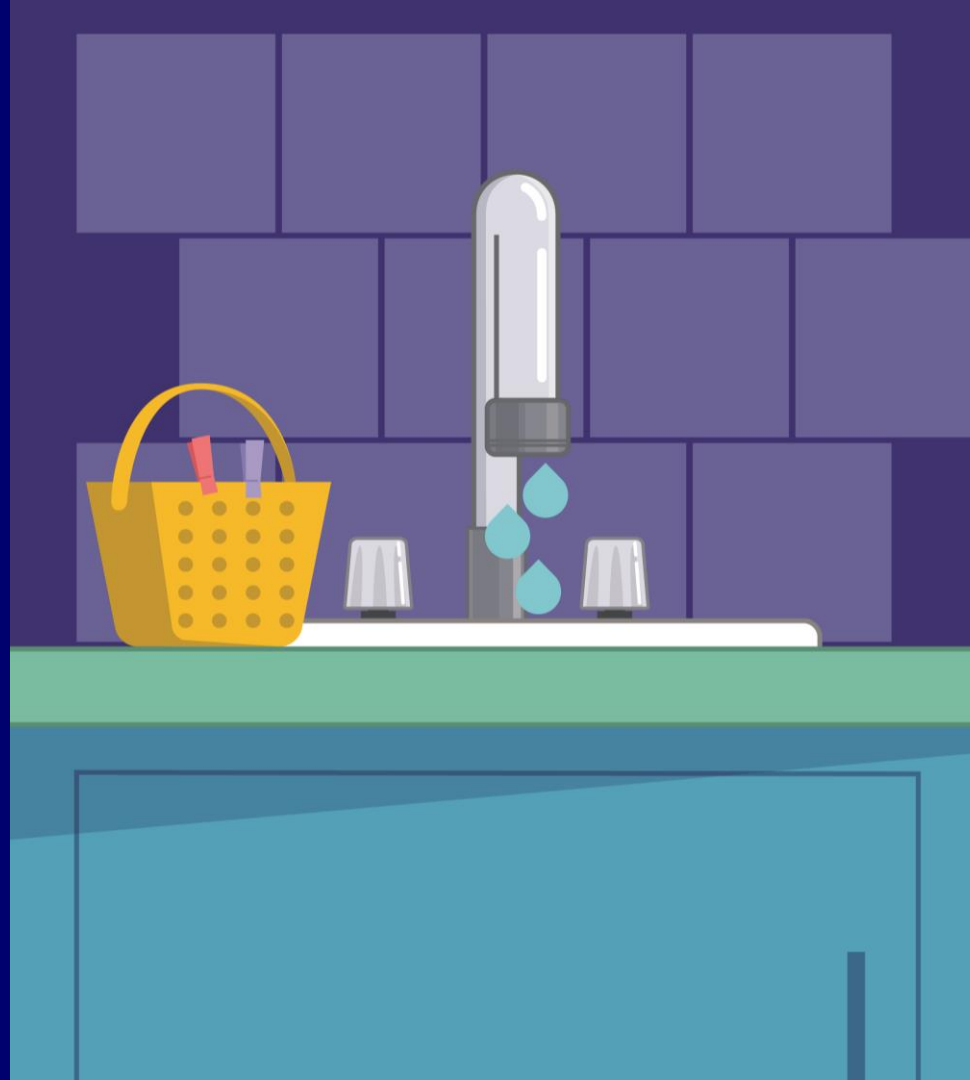
**Have you ever seen
a leak at home or at
school?**



Did you know?

A dripping tap can waste up to 2,000 litres of water a month!

That's equal to 2,000 cartons of milk.



Does your school waste water?

How can you tell? Do a water audit!



Use a school map and plan your investigation



Find water devices and look for leaks and breaks



Record the results

What is a water device?

Indoor tap



Toilet



Urinal



Bubbler



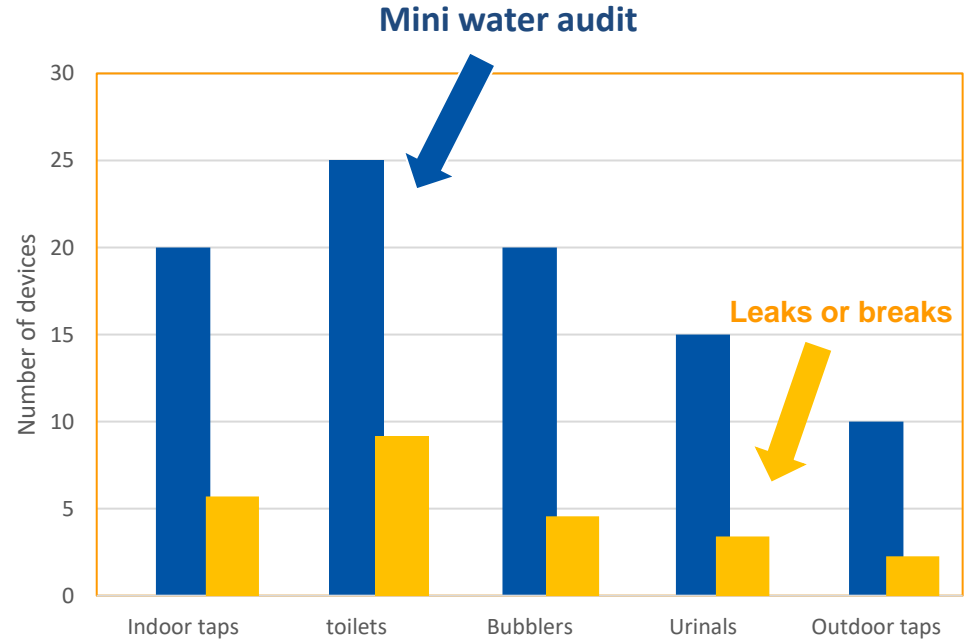
Outdoor tap



Rainwater tank

What does your data tell you?

- How many devices are in your school.
- How many are working well.
- How many have leaks and breaks.



Can you recommend solutions?

What actions need to be taken?

- Turn the taps off?
- Report leaks or broken devices?
- Use water carefully?
- Get others involved?

What else can you think of?



How can you share your findings?

There's lots of ways to share your findings with your school community!

Think about

- what you can do to spread the word?
- what's your message?
- how can you get people to take notice?



Raise awareness

Can you

- create a poster to help others learn how to save water and report leaks and breaks?
- present your findings and recommendations to your principal?
- make a video or a play for school assembly?



What I learned about water

Write or draw in a droplet

