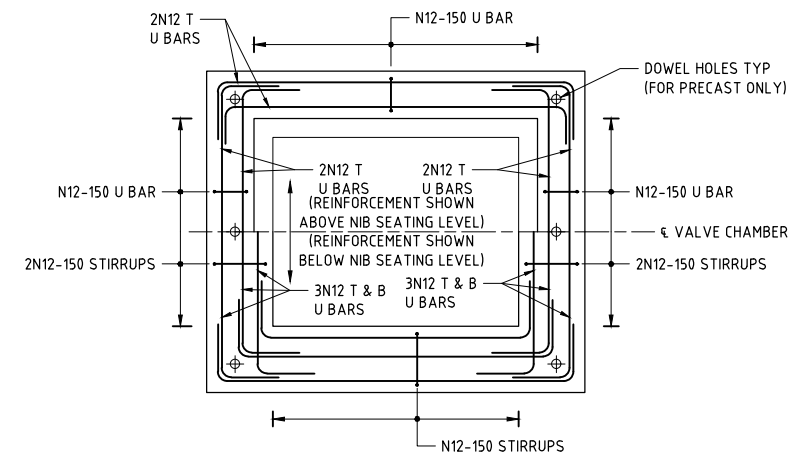


WEIR CHAMBER
ROOF SLAB REINFORCEMENT LAYOUT (FOR BOTH PRECAST OR CAST IN-SITU)

SCALE 1:20
REFER TO NOTE 5



VALVE CHAMBER
ROOF SLAB REINFORCEMENT LAYOUT (FOR BOTH PRECAST OR CAST IN-SITU)

SCALE 1:20

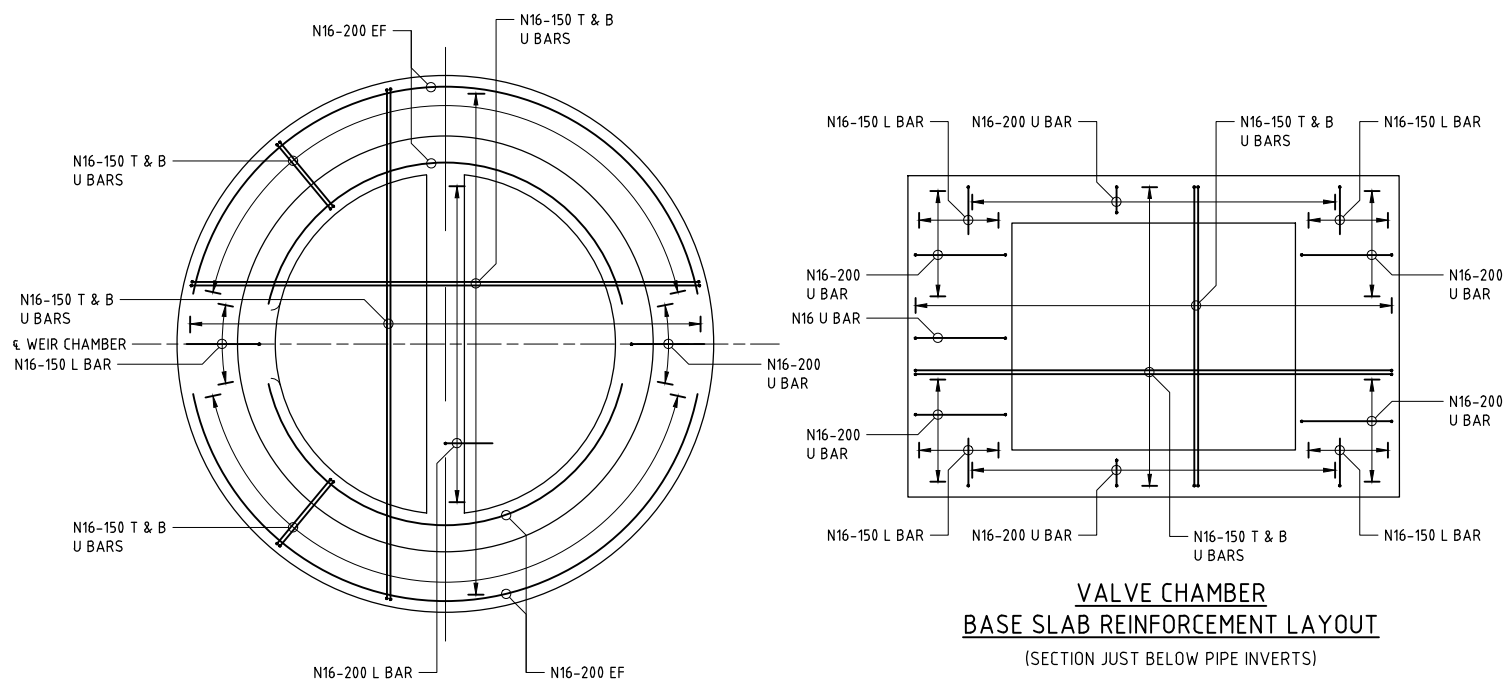
REINFORCEMENT IS SYMMETRICAL ABOUT 4 VALVE CHAMBER REFER TO NOTE 5

1. THIS DRAWING SHALL BE READ IN CONJUNCTION WITH THE FOLLOWING:

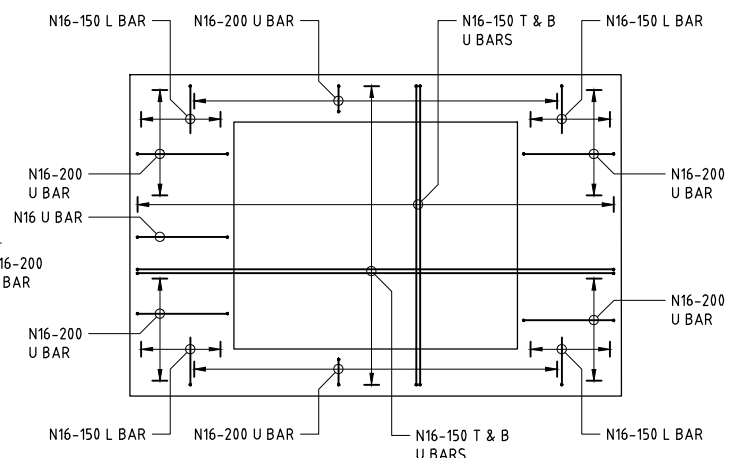
- a. DTC/2000 - MAINTENANCE HOLES, CONSTRUCTION NOTES
- b. DTC/2251 - MAINTENANCE HOLES, PRECAST DN1050-DN1200, NOTES, INSTRUCTIONS AND DRAWING LIST
- c. DTC/2401 - EMERGENCY RELIEF STRUCTURE: INSTRUCTIONS, GENERAL NOTES & DRAWING LIST
- d. DTC/2404 - EMERGENCY RELIEF STRUCTURE: ARRANGEMENT 2B - NEW WEIR & VALVE CHAMBERS (SEPARATE STRUCTURES), GA & SECTION
- e. DTC/2413 - EMERGENCY RELIEF STRUCTURE: ARRANGEMENT 2B - STRUCTURAL REINFORCEMENT DETAILS

SHEET 2 OF 2.

3. AN AMOUNT OF REINFORCEMENT EQUIVALENT TO THAT TRUNCATED BY OPENINGS SHALL BE ADDED LOCALLY TO THE SIDES OF THE OPENING AT A SPACING OF 4 x BAR DIAMETER.
3. REFER TO DTC/2000 FOR CAST IN-SITU CONCRETE AND REINFORCEMENT NOTES.
4. REFER TO DTC/2251 FOR PRECAST CONCRETE AND REINFORCEMENT NOTES.
5. REFER TO DETAIL 'G' OR 'H' ON DTC/2409 FOR TYPICAL ROOF CONNECTING TO CHAMBER WALL DETAIL.
6. REQUIRED CONCRETE CLASS S40.
7. REQUIRED CONCRETE COVER TO REINFORCEMENT: INTERNAL FACES 75 mm, FACES AGAINST GROUND 45 mm.
8. PREPARATION OF SURFACE AT CONSTRUCTION JOINTS TO COMPLY WITH SECTION C3.13.2 OF TECHNICAL SPECIFICATION – CIVIL: DOCUMENT No. CPMS0023. THE SURFACES OF PREVIOUSLY PLACED CONCRETE AT CONSTRUCTION JOINTS MUST BE ROUGHENED BY REMOVING ALL LOOSE AGGREGATE, LAITANCE AND SUFFICIENT MORTAR TO EXPOSE AGGREGATES TO A DEPTH OF 3 mm.



WEIR CHAMBER
BASE SLAB REINFORCEMENT LAYOUT
(SECTION JUST BELOW PIPE INVERTS)
SCALE 1:20



VALVE CHAMBER
BASE SLAB REINFORCEMENT LAYOUT
(SECTION JUST BELOW PIPE INVERTS)
SCALE 1:20

DINESH DINESHHARAN
MANAGER - ENGINEERING

ENGINEERING & TECHNICAL SUPPORT

DEEMED TO COMPLY DRAWINGS

**EMERGENCY RELIEF STRUCTURE
ARRANGEMENT 2B - NEW WEIR & VALVE CHAMBERS
(SEPARATE STRUCTURES) - STRUCTURAL REINFORCEMENT DETAILS
SHEET 1 OF 2**

DTC

2412

ISSUE	DATE
-------	------

A	14/09/21
---	----------