

Greater Macarthur Growth Servicing Plan

Delivering our water future

Sydney Water is delivering a transformative investment in our city to ensure our water, wastewater and stormwater systems meet the needs of our customers now and in the future.

Our infrastructure delivery is timed to support the NSW Government's growth ambitions and is aligned with housing supply policy. New infrastructure, amplifications and upgrades will ensure the resilience and reliability of our water supply for generations to come.

The expansive program of work is being delivered across Greater Sydney, including the Blue Mountains and the Illawarra. A significant number of projects are currently in planning, while many are in delivery or have been completed.

Explore the [Major Projects Pipeline](#).

Significant growth is anticipated in the Macarthur Region, with an additional 82,000 homes and 69,000 new jobs by 2056. Much of this growth will occur in currently rural or semi-rural areas including Menangle, Gilead, Appin, Wilton, Picton, Bargo and Buxton.

The servicing area is around 40km long (Glenfield to Bargo) and 35km wide (Warragamba to Appin) and includes the Campbelltown, Wollondilly and Camden Local Government Areas.

Water servicing in the region poses opportunities, challenges and complexities. The region is largely serviced by rainfall dependent water supply from southern dams (Avon, Cataract and Cordeaux) and

existing wastewater services are limited.

The Greater Macarthur Growth Servicing Plan recommends a two-phase approach. The plan will adapt to support growth in the region in the immediate term to 2031, and then in the longer term to 2056. The plan includes drinking water, recycled water, wastewater, and stormwater services.

Sydney Water aspires to reimagine water and wastewater servicing in the Macarthur Region to align with NSW Government housing supply policy, and the need to provide sustainable, affordable and reliable water services for these communities.

Benefits for our customers and communities



69,000 new jobs supported by 2056

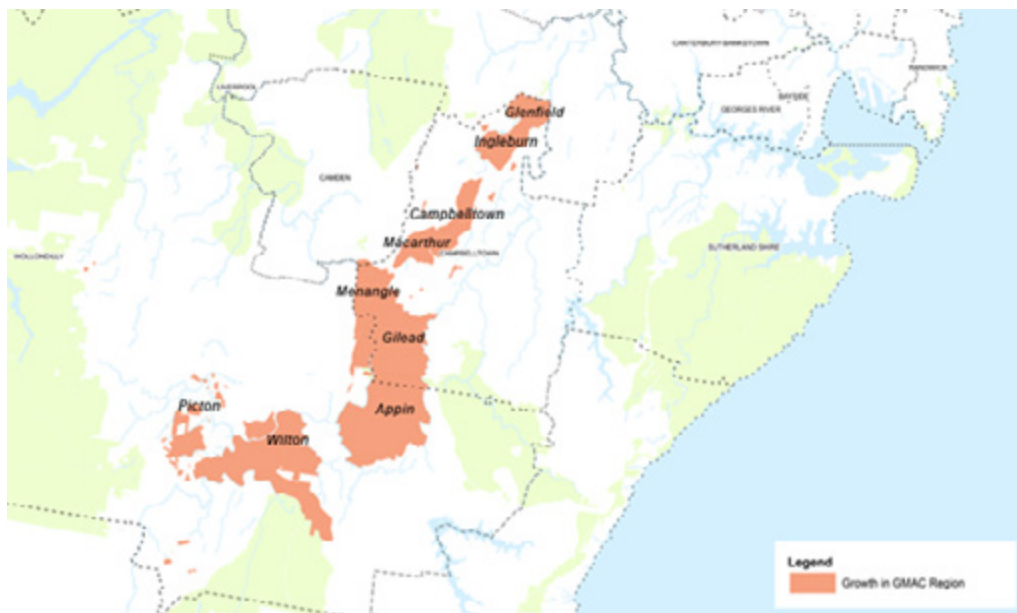


82,000 new homes serviced by 2056



Rainfall independent water supply to support growth and resilience

Location



Contact us

Website sydneywater.com.au

Email: macarthur@sydneywater.com.au

Phone 13 20 92
(8am – 5.30 pm, Monday – Friday except public holidays)

Interpreter service 13 14 50

This information is correct at the time of printing.

Please visit sydneywater.com.au for the latest updates.

