

Bonds Creek Carrier Extension

Delivering our water future

Sydney Water is delivering a transformative investment in our city to ensure our water, wastewater and stormwater systems meet the needs of our customers now and in the future.

Our infrastructure delivery is timed to support the NSW Government’s growth ambitions and is aligned with housing supply policy. New infrastructure, amplifications and upgrades will ensure the resilience and reliability of our water supply for generations to come.

The expansive program of work is being delivered across Greater Sydney, including the Blue Mountains and the Illawarra. A significant number of projects are currently in planning, while many are in delivery or have been completed.

Explore the [Major Projects Pipeline](#).

Identified as a key growth area by the NSW Government, the Austral Leppington catchment sits along the eastern front of the South West Growth Area and parts of the Western Sydney Aerotropolis.

This catchment will see substantial growth over the coming years, increasing from 2300 dwellings in 2022 to approximately 38,000 dwellings by 2056.

To support this growth and development, Sydney Water is constructing a number of critical water and wastewater assets including the new Bonds Creek Carrier – a 1.4 km wastewater extension to the Austral Leppington Wastewater Stage 3, Phase 1 project.

When completed in 2025, the existing carrier will be extended to transfer wastewater flows to the Upper South Creek Advanced Water Recycling Centre (AWRC). The wastewater will be treated to a high-quality standard, producing recycled water for a range of residential, agricultural and industrial uses. Given its high quality, recycled water produced at the AWRC can also be released to local waterways such as the Nepean and Warragamba Rivers to help sustain important river ecosystems.

Benefits for our customers and communities



Produce recycled water for a range of residential, agricultural and industrial uses



Decrease demand and stress on our drinking water supply



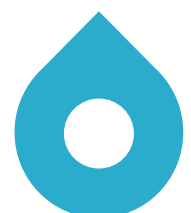
Deliver critical water and wastewater assets to support growth



Utilise trenchless drilling techniques during construction to reduce environmental impact



Enhance aquatic ecosystems with environmental flows of high-quality recycled water

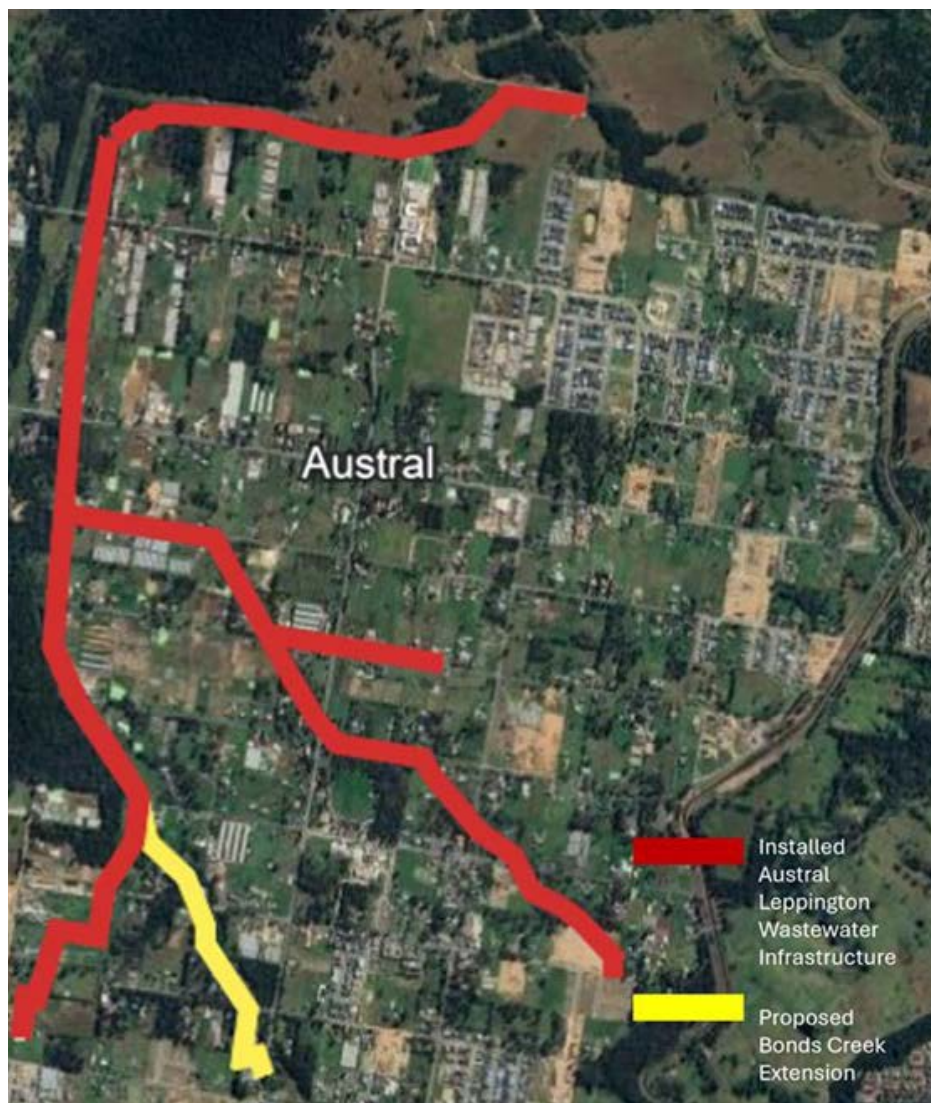


Investment

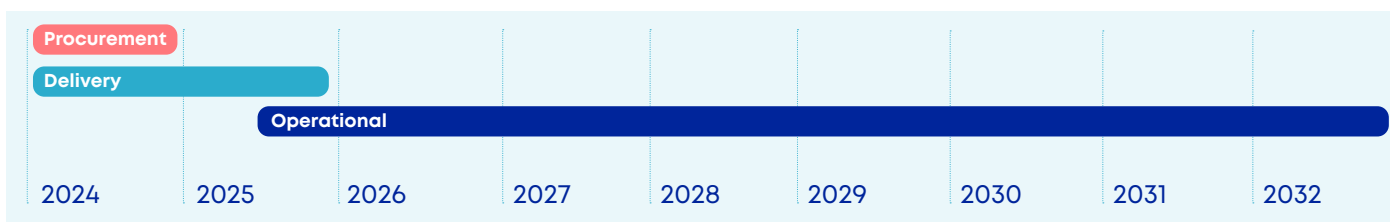


\$55m

Location



Project timeline



Contact us

Website sydneywater.com.au

Email australwastewater@sydneywater.com.au

Phone 13 90 52
(9 am – 5 pm, Monday – Friday)

Interpreter service 13 14 50

This information is correct at the time of printing.

Please visit sydneywater.com.au for the latest updates.